

SSSS7 2(H)mm, 2mm-travel Type

Compact general purpose type
with specifiable soldering method



Typical Specifications

Items		Specifications
Rating (max.)/(min.) (Resistive load)		0.3A 4V DC / 50μA 3V DC
Contact resistance (Initial performance / After lifetime)		70mΩ max. / 130mΩ max.
Operating force		Refer to the dimensions.
Operating life	Without load	10,000 cycles
	With load	10,000 cycles (0.3A 4V DC)

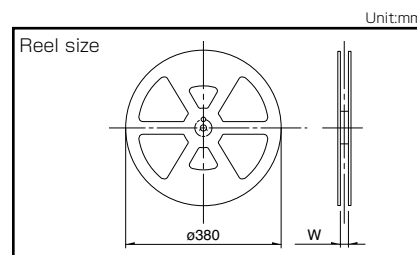
Product Line

Travel (mm)	Actuator direction	Actuator length (mm)	Poles	Positions	Changeover timing	Soldering	Operation	Minimum order unit (pcs.)		Products No.	Drawing No.
								Japan	Export		
2	Horizontal	2	1	2	Not specified	Manual	Standard	10,000	50,000	SSSS710100	1
						Reflow		2,000	8,000	SSSS710607	2
				3	Non shorting	Manual		8,000	40,000	SSSS711100	3
						Reflow		2,000	8,000	SSSS711403	4

Packing Specifications

Taping

Product No.	Number of packages (pcs.)			Reel width W (mm)	Tape width (mm)	Export package measurements (mm)
	1 reel	1 case /Japan	1 case /export packing			
SSSS710607	2,000	4,000	8,000	17.4	16	417×409×139
SSSS711403				25.4	24	406×406×190



Bulk

Product No.	Number of packages (pcs.)		Export package measurements (mm)
	1 case /Japan	1 case /export packing	
SSSS710100	10,000	50,000	400×270×290
SSSS711100	8,000	40,000	

Detector

Slide

Push

Rotary

Power


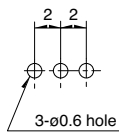

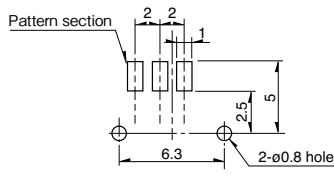
Dual-in-line
Package Type

Small size
General Use Type

Big size
General Use Type

■ Dimensions

Unit:mm

No.	Photo	Style	PC board mounting hole dimensions (Viewed from direction A)
1	<p>1-pole, 2-position</p> 	<p>Terminal No. ①</p> <p>Operating force with detent : 1.5N</p>	<p>3-ϕ0.6 hole</p>
2	<p>1-pole, 2-position Reflow</p> 	<p>Terminal No. ①</p> <p>Operating force with detent : 1.5N</p>	<p>2-ϕ0.8 hole</p>
3	<p>1-pole, 3-position</p> 	<p>Terminal No. ①</p> <p>Operating force with detent : a \rightarrow b } 1.75N c \rightarrow b } b \rightarrow a } 2.5N b \rightarrow c }</p>	<p>4-ϕ0.6 hole</p>
4	<p>1-pole, 3-position Reflow</p> 	<p>Terminal No. ①</p> <p>Operating force with detent : a \rightarrow b } 1.75N c \rightarrow b } b \rightarrow a } 2.5N b \rightarrow c }</p>	<p>2-ϕ0.8 hole</p>

Detector

Slide

Push

Rotary

Power

Dual-in-line
Package Type

Small size
General Use Type

Big size
General Use Type

SSSS7 2(H)mm, 2mm-travel Type

Detector

Slide

Push

Rotary

Power

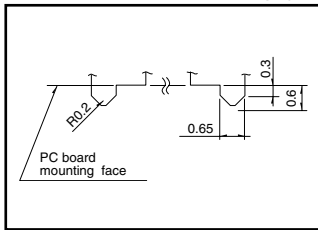
Dual-in-line
Package Type

Small size
General Use Type

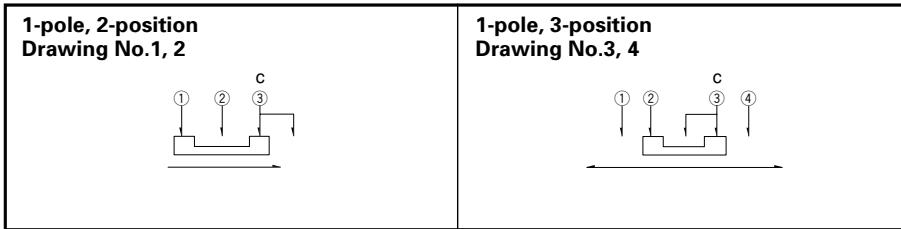
Big size
General Use Type

Detail of (a)

Unit:mm

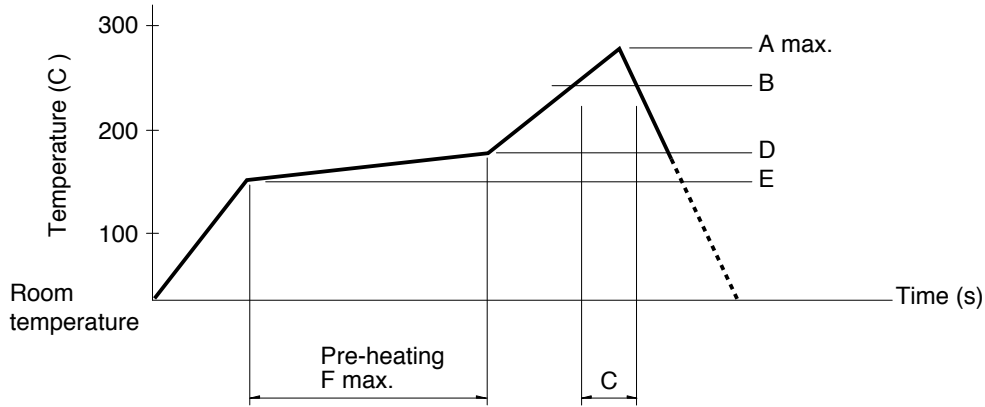


Circuit Diagram (Viewed from Direction A)



Example of Reflow Soldering Condition

1. Heating method: Double heating method with infrared heater.
2. Temperature measurement: Thermocouple ϕ 0.1 to 0.2 CA (K) or CC (T) at soldering portion (copper foil surface).
A heat resisting tape should be used for fixed measurement.
3. Temperature profile



Series (Reflow type)		A (°C) 3s max.	B (°C)	C (s)	D (°C)	E (°C)	F (s)
SSSS2	Vertical 1-pole, 3-position	260	230	40	180	150	120
	Horizontal 1-pole, 2-position 1-pole, 3-position 2-pole, 3-position						
	Vertical 1-pole, 2-position	250					
SSSS7		260					
SSAH, SSAG, SSAJ, SSAL, SSSS8		260					

Notes

1. The condition mentioned above is the temperature on the mounting surface of a PC board. There are cases where the PC board's temperature greatly differs from that of the switch, depending on the PC board's material, size, thickness, etc. The above-stated conditions shall also apply to switch surface temperatures.
2. Soldering conditions differ depending on reflow soldering machines. Prior verification of soldering condition is highly recommended.

Reference for Hand Soldering

Series	Soldering temperature	Soldering time
SSSF, SSSU	350±10°C	3+1/0s
SSSS2	350±10°C	4s max.
SSSS9	350±10°C	3s max.
SSAH, SSAG, SSAJ, SSAL	350±5°C	3s max.
SSSS8	330±5°C	3s max.
SSSS7	320±5°C	3s max.
SSAC	300±10°C	2s max.

Reference for Dip Soldering

(For PC board terminal types)

Series	Items		Dip soldering	
	Preheating temperature	Preheating time	Soldering temperature	Duration of immersion
SSSS2	100°C max.	60s max.	260±5°C	3±1s
SSSS9	120°C max.	60s max.	260±5°C	5+0/-1s (2 times)
SSSF, SSSU	100°C max.	60s max.	260±5°C	10±1s/5±1s
SSAC	100°C max.	60s max.	260±5°C	5±1s