

DATA SHEET

HSPPAD132A

ALPSALPINE ALPSALPINE CO.,LTD.

HEAD OFFICE
1-7, YUKIGAYA-OTSUKA-MACHI, OTA-KU, TOKYO, 145-8501, JAPAN
PHONE +81(3)3726-1211 FAX +81(3)3728-1741
NAGAOKA PLANT
1-3-5, HIGASHITAKAMI-MACHI, NAGAOKA-CITY, NIIGATA-PREF, 940-0006, JAPAN
PHONE +81 258-24-4111 FAX +81 258-24-4110

This specification is subject to change without notice.

History of Revision

Datasheet Rev.	Date	Note
00	Jan/11/2019	Draft

CONTENTS

1. OVERVIEW	4
2. FEATURES	4
3. ABSOLUTE MAXIMUM RATINGS	4
4. OPERATING CONDITIONS	5
5. I/O CHARACTERISTICS	5
6. BLOCK DIAGRAM	6
7. Power Up and Power Down Sequence	6
8. COMMUNICATION INTERFACE	7
9. RECOMMENDED SEQUENCE	8
10. STATUS	8
11. PACKAGE DIMENSION	9
12. LEGAL DISCLAIMER	10

ALPS PRODUCT NO.
HSPPAD132A**1. OVERVIEW**

The device is a pressure sensor using effect of piezo resistive bridge circuit formed on silicon diaphragm.

The device consists pressure and temperature sensor, 16bit analog to digital converter, control unit with MTP ROM, and I2C serial Interface.

The device delivers temperature compensated pressure value.

Small size and waterproof(Class IPX7) LCP package.

2. FEATURES

- Pressure Range 300 to 1100 hPa (+9000 to -500m in altitude)
- Supply Voltage 1.7 to 3.6 V
- Operating Temperature -40 to +85°C
- Digital interface I2C slave interface (High Speed Mode) is supported.
- Lead free, RoHS instruction, Halogen free conforming

3. ABSOLUTE MAXIMUM RATINGS

Item	Symbol	Unit.	Specification			Notes
			min.	Typ.	max.	
Max supply voltage	VDD	[V]	-0.4	-	3.63	
Max load pressure	Pmax	[hPa]	260	-	30000	
Storage temperature	Tstg	[°C]	-40	-	+125	
ESD	HBM	[V]			2000	

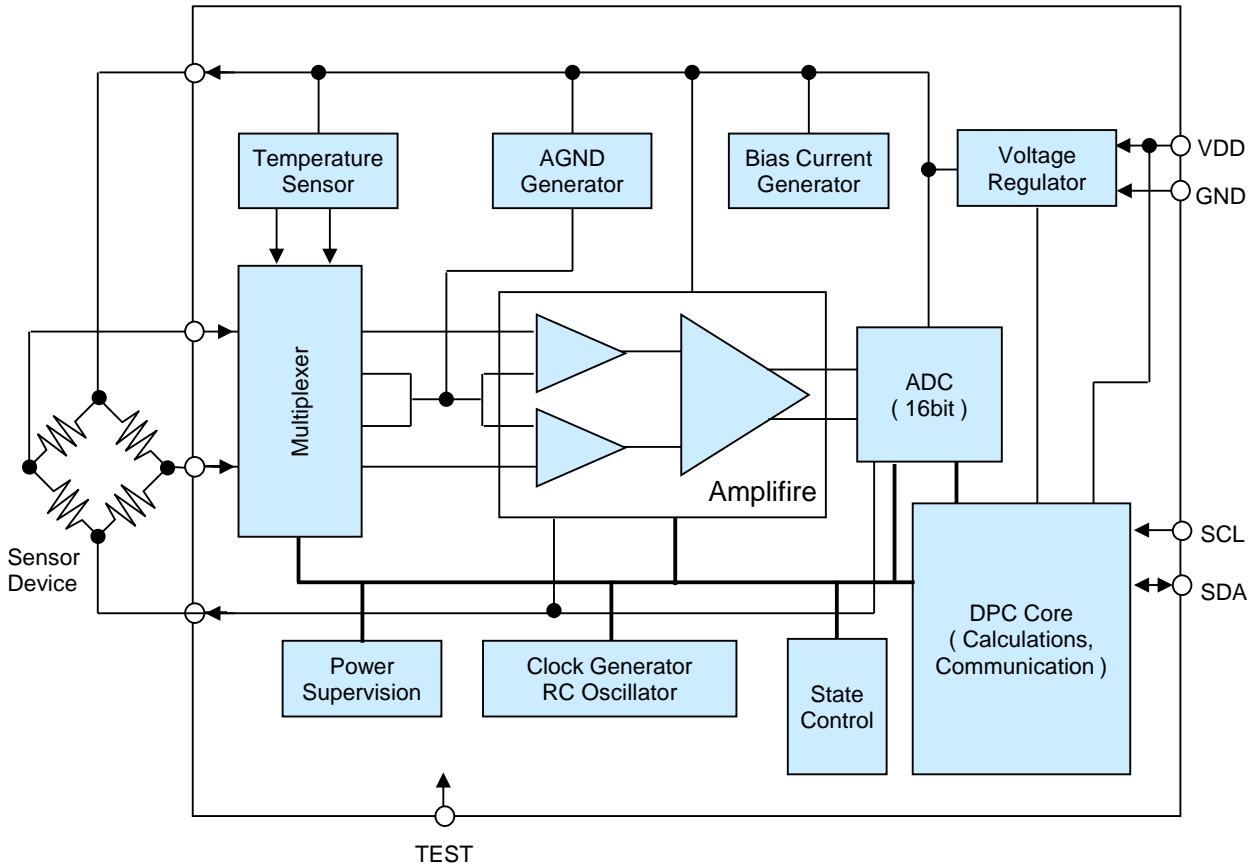
4. OPERATING CONDITIONS

Item	Symbol	Unit.	Specification			Notes
			min.	Typ.	max.	
Classify of Pressure		[-]		Absolute		
Supply voltage	VDD	[V]	1.7	-	3.6	
Operating temperature	Topr	[°C]	-40	-	+85	
Range of measurement pressure	Popr	[hPa]	300	-	1100	
Current consumption	IDDpeak	[uA]	-	1350	1900	Active State
			-	0.07	0.25	Sleep State
Pressure Resolution		[hPa]	-	0.013	-	
Pressure Absolute Accuracy		[hPa]	-2	-	2	-10 to 60°C
Temperature Resolution		[°C]	-	0.002	-	
Temperature Accuracy		[°C]	-2	-	2	-10 to 60°C
Conversion time		[msec]	-	7	10	

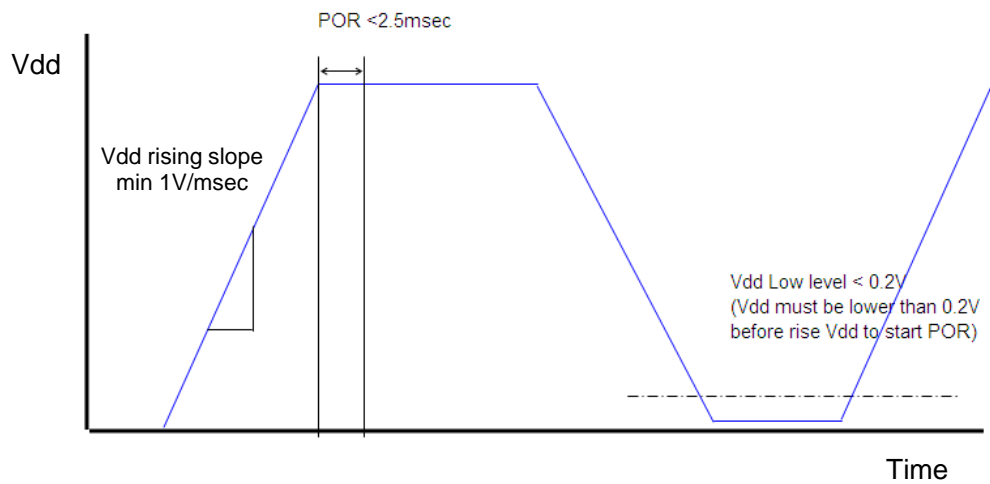
5. I/O CHARACTERISTICS

Item	Symbol	Unit.	Specification			Notes
			min.	Typ.	max.	
I2C Clock Frequency	fscl	[kHz]	-	-	3400	High Speed mode
Low Level Input Voltage	VIL	[V]	-	-	0.3×VDD	
High Level Input Voltage	VIH	[V]	0.7×VDD	-	-	
Low Level Output Voltage	VOL	[V]	-	-	0.2×VDD	
High Level Output Voltage	VOH	[V]	0.8×VDD	-	-	

6. BLOCK DIAGRAM



7. Power Up and Power Down Sequence



8. COMMUNICATION INTERFACE

I2C SLAVE INTERFACE & MEASUREMENT METHOD OF PRESSURE AND TEMPERATURE

- Slave device
- 7-bit addressing, Combined format
- Support Fast-mode, Hs-mode
- It does not support 10-bit addressing
- The device address can be changed and the standard setup is "1001000"
- Data transfers follow the combined format with 7-bit addressing of I2C interface.
- Data is transferred with the most significant bit (MSB) first and big endian.

Symbol	Description
S	START condition
P	STOP condition
A	acknowledge (SDA LOW)
N	not acknowledge (SDA HIGH)
W	write ('0')
R	read ('1')

Write Format

MASTER	S	DEVICE ADDRESS	W		COMMAND		P
SLAVE			A			A	

- For starting full measurement, Set command "0xAC" .

Read Format

MASTER	S	DEVICE ADDRESS	R			A		A
SLAVE			A		STATUS		PRESS. DATA (MSB)	
				A		A		N P
		PRESS. DATA (LSB)			TEMP. DATA (MSB)		TEMP. DATA (LSB)	

- After active measurement time (MAX.10ms), the Acquired data stored to output register
- These data are compensated, but unit conversion is not carried out

- To convert it into the unit converted value, it calculates as follows.

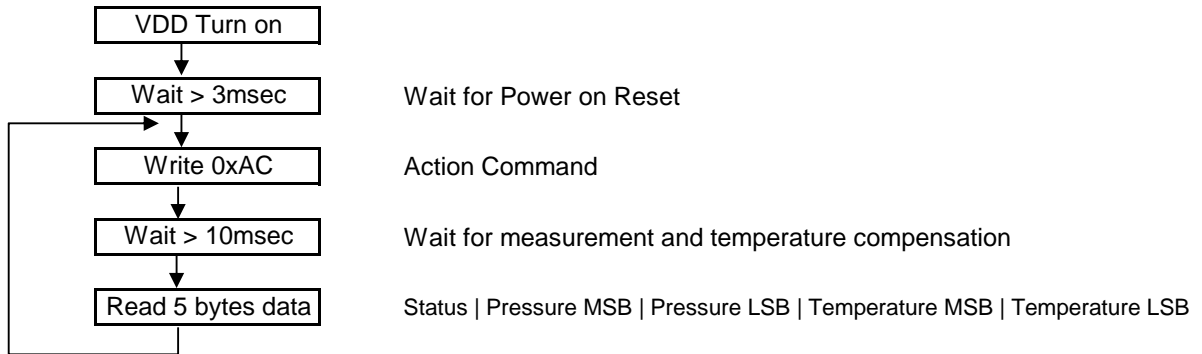
Unit conversion

$$\text{Pressure [hPa]} = \text{PRESS. DATA} \times 860 / 65535 + 250$$

$$\text{Temperature [°C]} = \text{TEMP. DATA} \times 125 / 65535 - 40$$

- Temperature accuracy is not guaranteed.

9. RECOMMENDED SEQUENCE



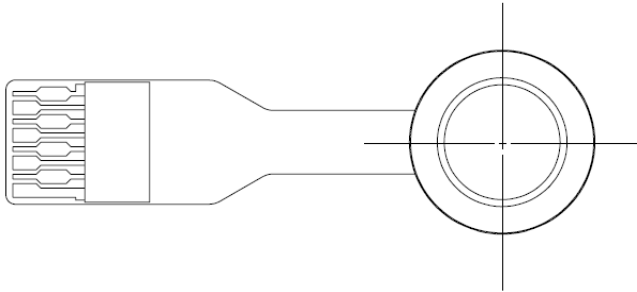
10. STATUS

- The status byte contains the following bits
- The status should be "0x40" in normal operation

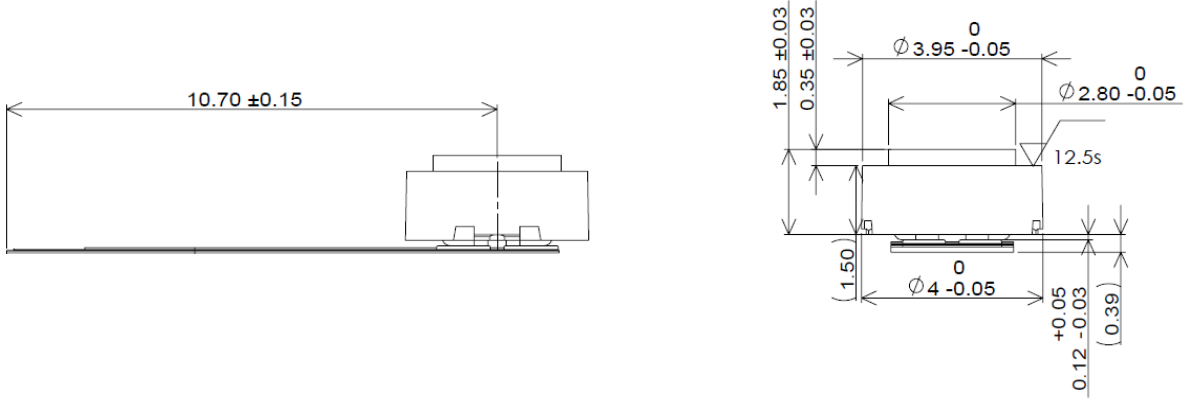
Bit	Name	Description
7	Not Used	0 = default
6	Power?	Power indication 0 = Power Off , 1 = Power On (VDD On)
5	Busy?	Busy indication 0 = Normal , 1 = Busy
4:3	Mode	Current mode 00 = Normal Mode , 01 / 10 / 11 = Adjustment Mode
2	Memory Error?	Memory integrity / error flag 0 = Test Passed , 1 = Test Failed
1	Data Corrected?	Data transfer / correction 0 = Normal , 1 = Data Transfer / Correction Error
0	Reserved	Reserve domain for extension 0 = default

11. PACKAGE DIMENSION

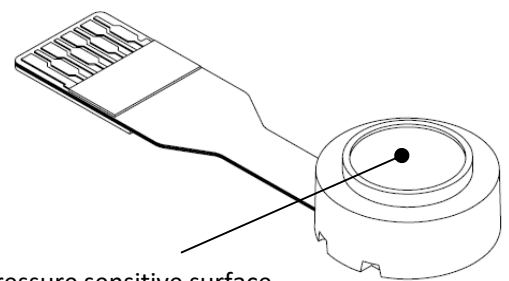
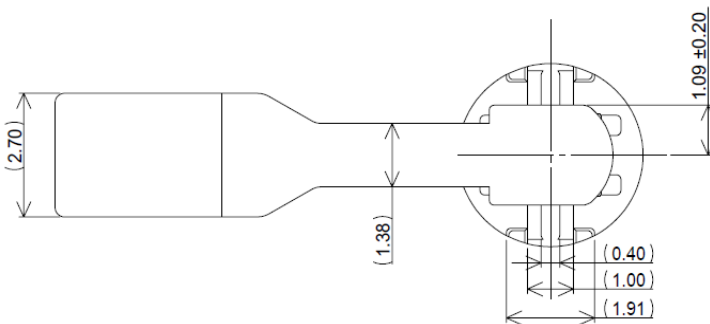
Top view



Side view



Bottom view

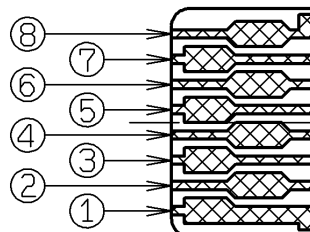


Pressure sensitive surface
 Please don't touch

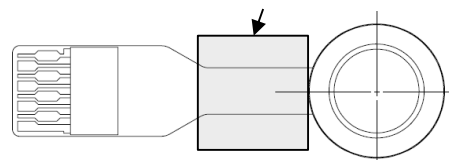
Pin Assign

①	GND
②	VDD
③	N/C
④	N/C
⑤	N/C
⑥	SDA
⑦	SCL
⑧	N/C

Connector top view



FPC bending area



12. LEGAL DISCLAIMER

1. 国内外の輸出関連法規により規制されている製品の輸出に際しては、同法規を遵守の上、必要な許可、手続き等をとってください。

For the export of products which are controlled items subject to foreign and domestic export laws and regulations, you must obtain approval and/or follow the formalities of such laws and regulations.

2. 軍用途又はテロ等の反社会活動目的では、当製品を一切使用しないでください。また、最終的にそれら用途・目的で使用されるおそれがある法人・団体・個人等へも当製品を一切供給しないでください。

Products must not be used for military and/or antisocial purposes such as terrorism, and shall not be supplied to any party intending to use the products for such purposes.

3. 当製品は、特に用途を指定していないかぎり、本来、AV、家電、事務機、情報機器、通信機器、アミューズメント機器等の一般電子機器用に設計、製造されたものです。したがって、原子力制御機器、宇宙・航空機で運行にかかわる機器等の用途では一切使用しないでください。

上記の使用禁止の用途以外で、医療機器、防犯機器、防災機器、海底用機器等の高度の安全性・信頼性を必要とする機器でのご使用の際は、弊社営業担当迄ご相談いただくか、またはセットでの十分な適合性の確認を行っていただいた上で、フェールセーフ設計、保護回路、冗長回路、誤動作防止設計、延焼対策設計等のセットでの安全対策設計を設けてください。

Unless provided otherwise, the products have been designed and manufactured for application to equipment and devices which are sold to end-users in the market, such as AV (audio visual) equipment, home electric equipment, office and commercial electronic equipment, information and communication equipment or amusement equipment. The products are not intended for use in, and must not be used for, any application of nuclear equipment, driving control equipment for aerospace or any other unauthorized use.

With the exception of the above mentioned banned applications, for applications involving high levels of safety and liability such as medical equipment, burglar alarm equipment, disaster prevention equipment and undersea equipment, please contact an Alps sales representative and/or evaluate the total system on the applicability. Also, implement a fail-safe design, protection circuit, redundant circuit, malfunction protection and/or fire protection into the complete system for safety and reliability of the total system.

4. 車載対応製品以外の製品を車載用にご使用される場合は、事前に弊社へご相談ください。

Before using products which were not specifically designed for use in automotive applications, please contact an Alps sales representative.