

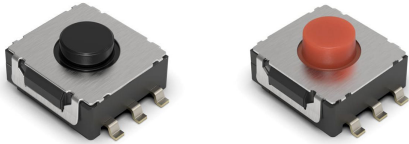
**TACT Switch™** Surface Mount Type

### 8.0mm Square Double Action Type (Surface Mount)

## SKUJ Series

**Smart Double action engineering for a more spacious vehicle interior.**

Automotive



- Series type: Sharp feeling type
- Absolute Maximum Ratings: 50mA 16V DC
- Rating (min.): 10 $\mu$ A 1V DC

Applications: Automotive: Power Windows, Steering

- Product List

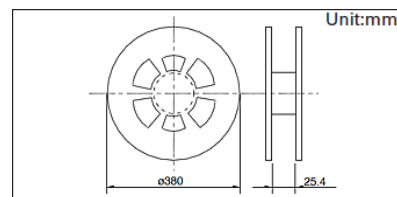
Products No.	Operating direction	Operating force (N)	Travel (mm)	Operating life (cycles)	Initial contact resistance	Dimensions (W×D×H) (mm)	Water-proof	Dust-proof	Automotive	Drawing No.
SKUJAAE010	Top push	1st 3.8, 2nd 6.4	1st 0.35, All 0.6	100,000	500mΩ max.	8.0×8.0×4.0	—	—	●	1
SKUJBBE010	Top push	1st 4.0, 2nd 8.0	1st 0.5, All 0.95	100,000	500mΩ max.	8.0×8.0×4.5	—	—	●	2

1. This catalog shows only outline specifications. When using the products, please obtain formal specifications for supply.  
2. Please place purchase orders for taping products per minimum order unit (1 reel or a case).

## ■ Packing Specifications

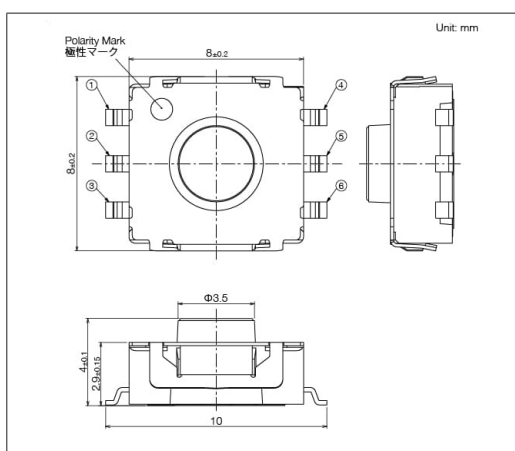
## Taping

Number of packages(pcs.)			Tape width (mm)	Export package measurements (mm)
1 reel	1 case / Japan	1 case / export packing		
1,300	7,800	7,800	24	395 x 395 x 205

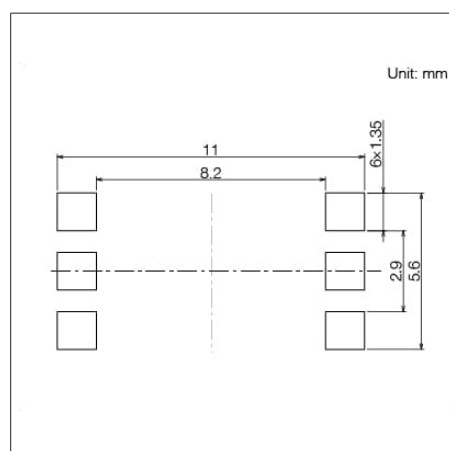


## Drawing No.1

## ■ Dimensions

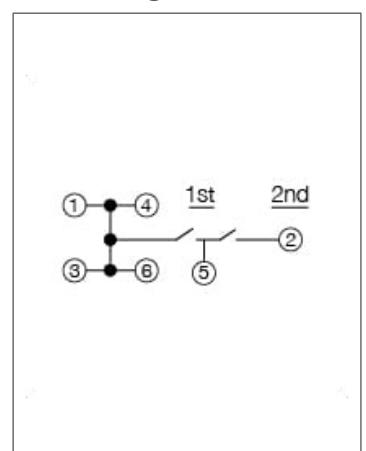


## ■ Land Dimensions



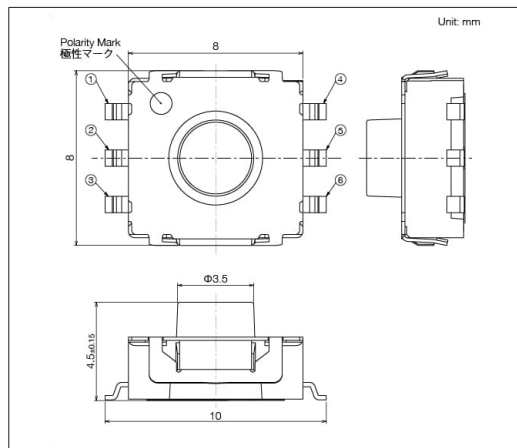
Viewed from mounting face.

- Circuit Diagram

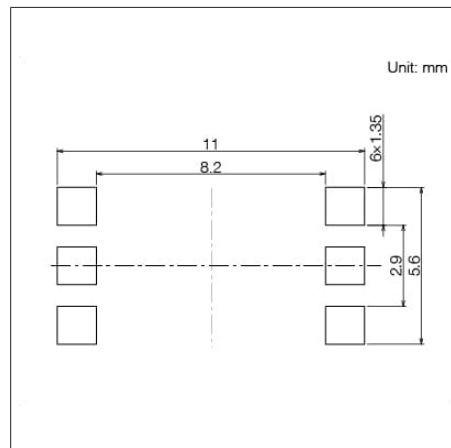


**TACT Switch™** Surface Mount Type**8.0mm Square Double Action Type (Surface Mount)**  
**SKUJ Series****Drawing No.2**

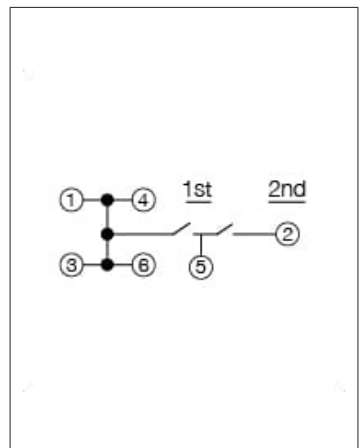
## ■ Dimensions



## ■ Land Dimensions



## ■ Circuit Diagram



Viewed from mounting face.