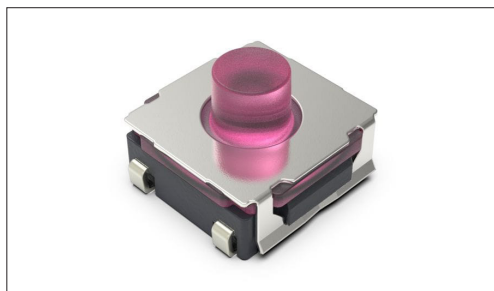


**TACT Switch™** Surface Mount Type

## 6.2mm Square (Surface Mount) SKTT Series

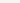
**Mid-stroke type with a height of 4.4mm, operating force of 4N, 500,000 operation cycles, and 0.36mm travel.**

 Automotive

- Series type: Sharp feeling type
- Absolute Maximum Ratings: 50mA 16V DC
- Rating (min.): 10 $\mu$ A 1V DC

```
Applications:Energy_Industrial:Industrial equipment
              Healthcare:Healthcare equipment
              Home:Major home appliances
              Automotive:Navigation/audio systems, HVAC,Steering
```

## ■ Product List

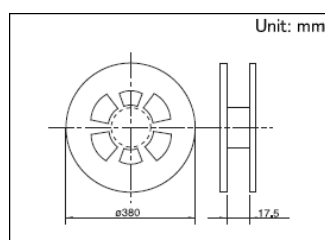
Products No.	Operating direction	Operating force (N)	Travel (mm)	Operating life (cycles)	Initial contact resistance	Dimensions (W×D×H) (mm)	Water-proof	Dust-proof	Automotive	Drawing No.
<b>SKTTABE010</b>	Top push	4.0	0.36	500,000	100mΩ max.	6.2×6.2×4.4	—	—		1

1. This catalog shows only outline specifications. When using the products, please obtain formal specifications for supply.  
2. Please place purchase orders for taping products per minimum order unit (1 reel or a case).

### ■ Packing Specifications

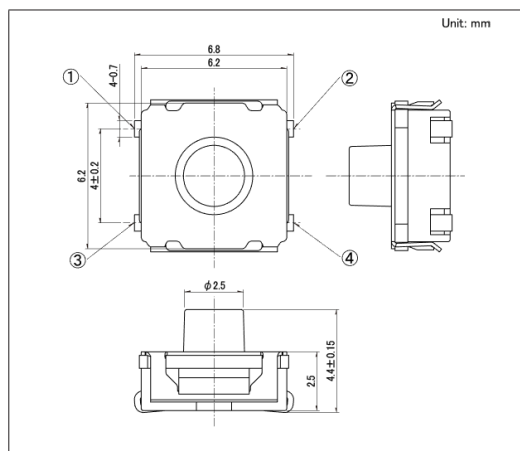
## Taping

Number of packages(pcs.)			Tape width (mm)	Export package measurements (mm)
1 reel	1 case / Japan	1 case / export packing		
1,600	12,800	12,800	16	395 x 395 x 205

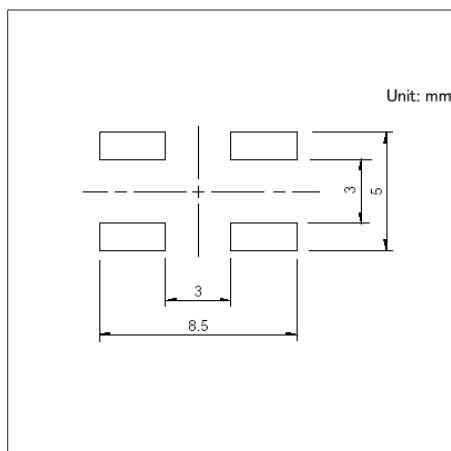


## Drawing No.1

## ■ Dimensions



## ■ Land Dimensions



Viewed from switch mounting face

- Circuit Diagram

