

# TACT Switch™ Surface Mount Type

5.3×5.4mm (Surface Mount)

## SKSU Series

Compact, quiet, heavy-duty mid-stroke type compliant with IP6X equivalent/IPX7.



Automotive



Water-proof Type



Dust-proof Type

※Please check the product list for compatible products

- Series type: Sharp feeling type
- Absolute Maximum Ratings: 50mA 16V DC
- Rating (min.): 10μA 1V DC

Applications: Home: Major home appliances  
 Mobile: Headsets, wearables  
 Game: Home handheld consoles  
 Audio\_TV: Pro audio  
 Automotive: Navigation/audio systems, HVAC,  
 Overhead consoles, Steering, Shifter

### Product List

Products No.	Operating direction	Operating force (N)	Travel (mm)	Operating life (cycles)	Initial contact resistance	Dimensions (W×D×H) (mm)	Water-proof	Dust-proof	Water-proof & Dust-proof	Automotive	Drawing No.
SKSUBCE010	Top push	3.0	0.9	250,000	100mΩ max.	5.3×5.4×4.34	●	●	IP6X equivalent/IPX7	●	1
SKSUAAE010	Top push	3.5	0.7	250,000	100mΩ max.	5.3×5.4×3.85	●	●	IP6X equivalent/IPX7	●	2
SKSUBBE010	Top push	5.0	1.04	250,000	100mΩ max.	5.3×5.4×4.34	●	●	IP6X equivalent/IPX7	●	1
SKSUBDE010	Top push	1.4	0.8	2,000,000	500mΩ max.	5.3×5.4×4.34	●	●	IP6X equivalent/IPX7	—	

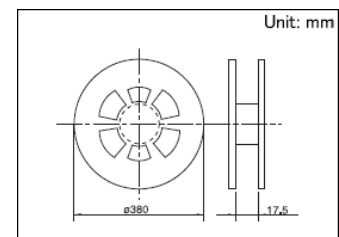
### ⚠ Note

1. This catalog shows only outline specifications. When using the products, please obtain formal specifications for supply.
2. Please place purchase orders for taping products per minimum order unit (1 reel or a case).
3. Protective structure :  
 Assumes the switch is left alone without being operated. Under the specified conditions, dust and water ingress with a significant impact on the switch's on-off function is prevented.  
 IP6X equivalent/IPX7 dust and water resistance is guaranteed for the switch alone and performance may not be guaranteed depending on the mounting conditions and usage.

### Packing Specifications

#### Taping

Products No.	Number of packages(pcs.)			Tape width (mm)	Export package measurements (mm)
	1 reel	1 case / Japan	1 case / export packing		
SKSUBCE010 SKSUBBE010 SKSUBDE010	2,200	17,600	17,600	16	395 x 395 x 205
SKSUAAE010	2,400	19,200	19,200	16	395 x 395 x 205

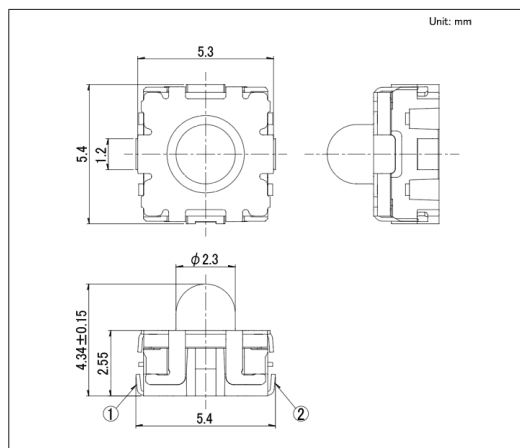


**TACT Switch™** Surface Mount Type

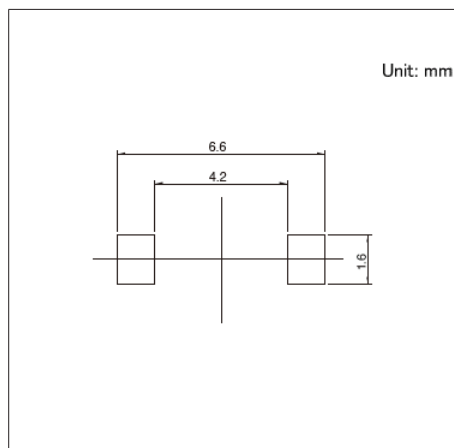
5.3×5.4mm (Surface Mount)

**SKSU Series****Drawing No.1**

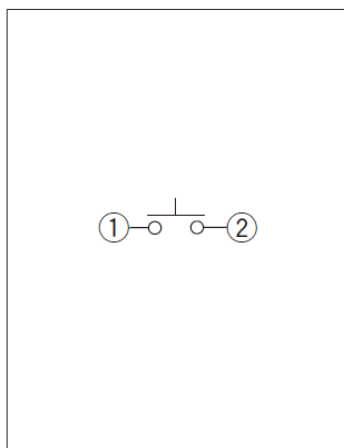
## ■ Dimensions



## ■ Land Dimensions



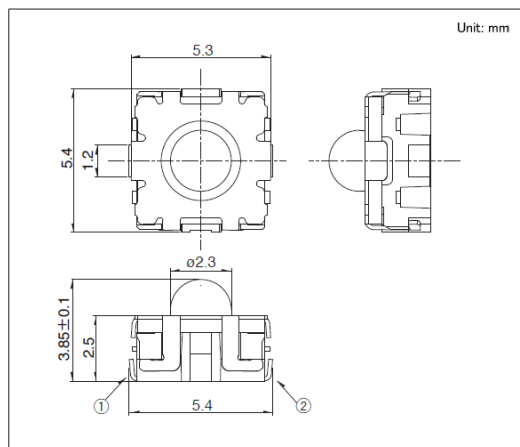
## ■ Circuit Diagram



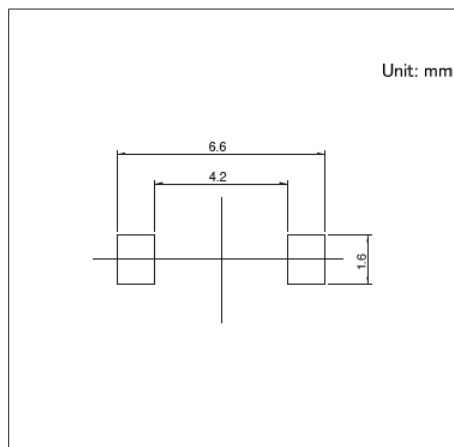
Viewed from switch mounting face

**Drawing No.2**

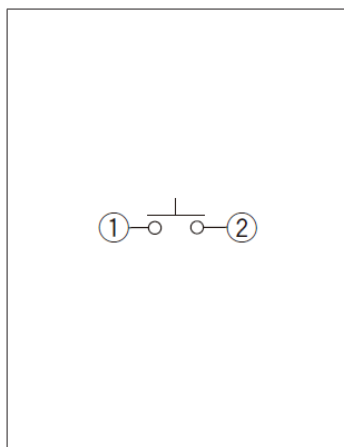
## ■ Dimensions



## ■ Land Dimensions



## ■ Circuit Diagram



Viewed from switch mounting face