

TACT Switch™ Surface Mount Type

4.8×3.25mm Side Push (Surface Mount)

SKSJ Series

Long-life half-mount type with excellent soldering strength, capable of 1 million operation cycles.



- Series type: Sharp feeling type
- Absolute Maximum Ratings: 50mA 12V DC
- Rating (min.): 10μA 1V DC

Applications: Mobile: Notebooks, peripherals, Headsets, wearables
 Game: Home handheld consoles
 Mobile: Headsets, wearables
 Healthcare: Healthcare equipment

■ Product List

Products No.	Operating direction	Operating force (N)	Travel (mm)	Operating life (cycles)	Initial contact resistance	Dimensions (W×D×H) (mm)	Water-proof	Dust-proof	Automotive	Drawing No.
SKSJLCE010	Side push	0.8	0.25	2,000,000	500mΩ max.	4.8×3.25×3.3	—	—	—	1
SKSJLEE010	Side push	1.6	0.4	1,000,000	500mΩ max.	4.8×3.25×3.3	—	—	—	

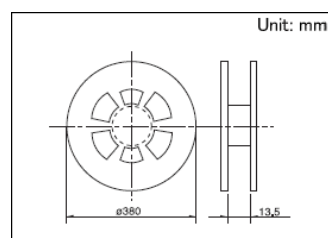
⚠ Note

1. This catalog shows only outline specifications. When using the products, please obtain formal specifications for supply.
2. Please place purchase orders for taping products per minimum order unit (1 reel or a case).

■ Packing Specifications

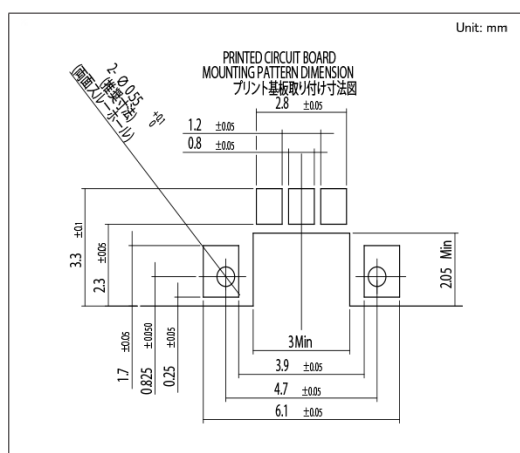
Taping

Number of packages (pcs.)			Tape width (mm)	Export package measurements (mm)
1 reel	1 case / Japan	1 case / export packing		
3,000	30,000	30,000	12	395 x 395 x 205

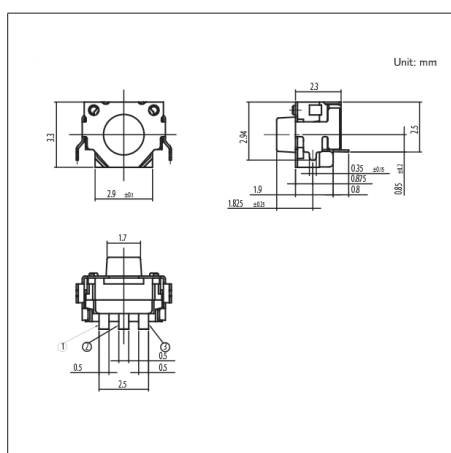


Drawing No.1

■ Dimensions



■ Land Dimensions



Viewed from switch mounting face

■ Circuit Diagram

