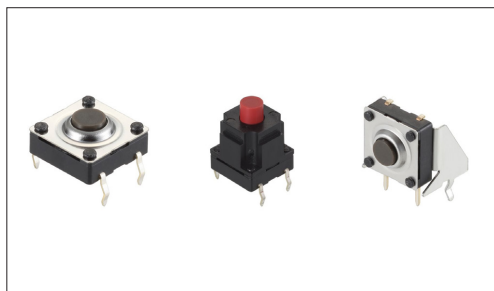


# TACT Switch™ Snap-in Type

## 10mm Square (Snap-in) SKQB Series

Excellent water-proof and dust-proof structure, suitable for water-related household appliances.



Automotive



Water-proof Type



Dust-proof Type

- Series type: Sharp feeling type
- Rating (max.): 50mA 12V DC
- Rating (min.): 10μA 1V DC

Applications: Energy\_Industrial: Industrial equipment  
Healthcare: Healthcare equipment, Analysis, test equipment  
Home: Major home appliances, Office equipment  
Automotive: Hood Latch (Side/Rear/Door/Gear),  
Navigation/audio systems, HVAC,  
Overhead consoles, Steering, Shifter

### Product List

Products No.	Type	Operating direction	Operating force (N)	Travel (mm)	Operating life (cycles)	Initial contact resistance	Dimensions (W×D×H) (mm)	Water-proof	Dust-proof	Water-proof & Dust-proof	Automotive	Drawing No.
SKQBARA010	Top push type	Top push	1.57	0.3	100,000	500mΩ max.	10.0×10.0×5.0	●	●	Conditions: Coating the terminals	●	1
SKQBASA010		Top push	2.55	0.3	100,000	500mΩ max.	10.0×10.0×5.0	●	●	Conditions: Coating the terminals	●	
SKQBAPA010		Top push	1.57	0.3	100,000	500mΩ max.	10.0×10.0×13.0	●	●	Conditions: Coating the terminals	●	2
SKQBAJA010		Top push	2.55	0.3	100,000	500mΩ max.	10.0×10.0×13.0	●	●	Conditions: Coating the terminals	●	
SKQBAQA010		Top push	1.57	0.3	100,000	500mΩ max.	10.0×10.0×23.2	●	●	Conditions: Coating the terminals	●	3
SKQBAMA010		Top push	2.55	0.3	100,000	500mΩ max.	10.0×10.0×23.2	●	●	Conditions: Coating the terminals	●	
SKQBLBA010	Side push type	Side push	1.57	0.3	100,000	500mΩ max.	11.5×11.9×11.0	●	●	Conditions: Coating the terminals	●	4

### Note

1. This catalog shows only outline specifications. When using the products, please obtain formal specifications for supply.
2. Switch terminals must be coated thoroughly until the terminals are fully covered.
3. When the switch is used in an environment subject to high humidity or condensation, make sure the terminals are coated thoroughly to prevent current leakage between terminals.
4. Avoid using coating material coating toluene or xylene. For more information on coating material, please contact us.
5. Please use 1.6mm thick PC boards.
6. Please place purchase orders per minimum order unit (integer).

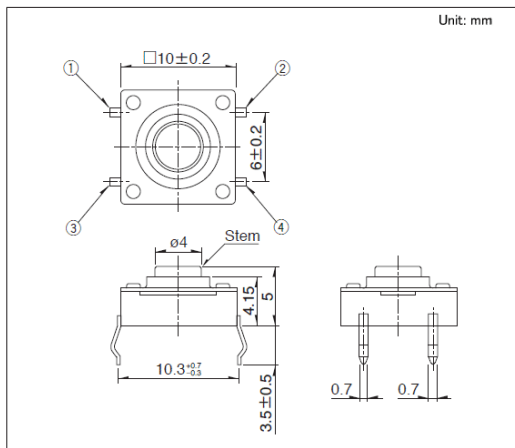
### Packing Specifications

#### Bulk

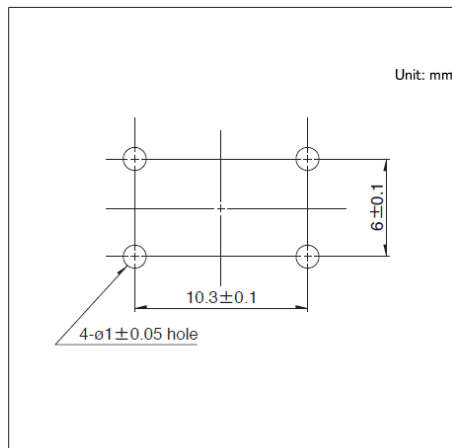
Products No.	Number of packages(pcs.)		Export package measurements (mm)
	1 case / Japan	1 case / export packing	
SKQBARA010 SKQBASA010 SKQBAPA010 SKQBAJA010 SKQBLBA010	4,000	12,000	309 x 476 x 347
SKQBAQA010 SKQBAMA010	2,000	6,000	309 x 476 x 347

**TACT Switch™ Snap-in Type****10mm Square (Snap-in)  
SKQB Series****Drawing No.1**

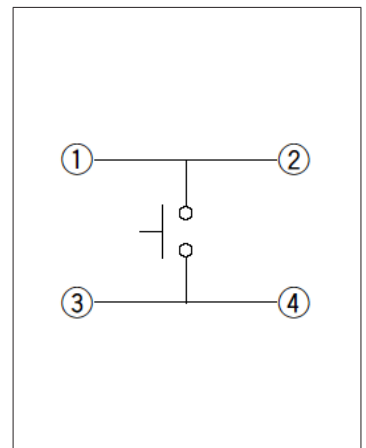
## ■ Dimensions



## ■ Mounting Hole Dimensions



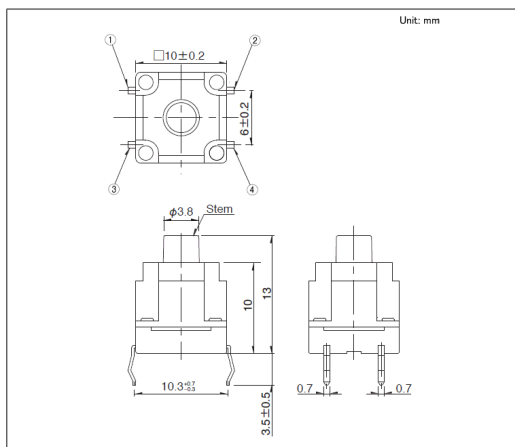
## ■ Circuit Diagram



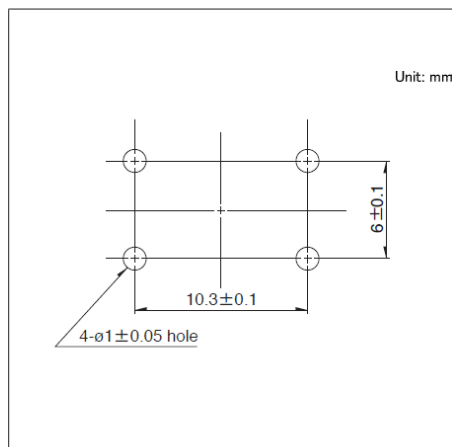
Viewed from mounting face.

**Drawing No.2**

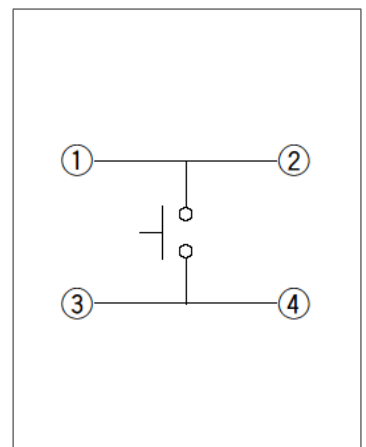
## ■ Dimensions



## ■ Mounting Hole Dimensions



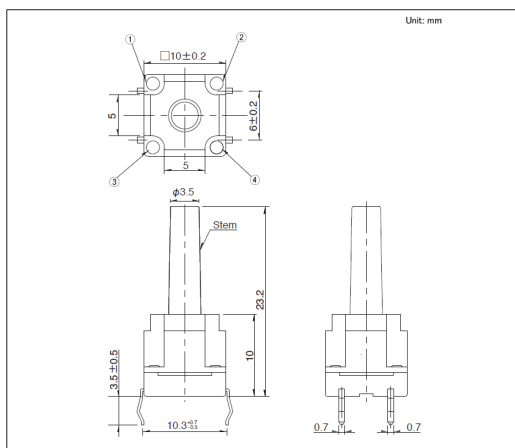
## ■ Circuit Diagram



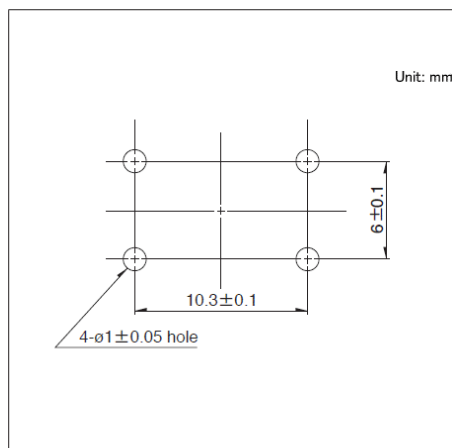
Viewed from mounting face.

**Drawing No.3**

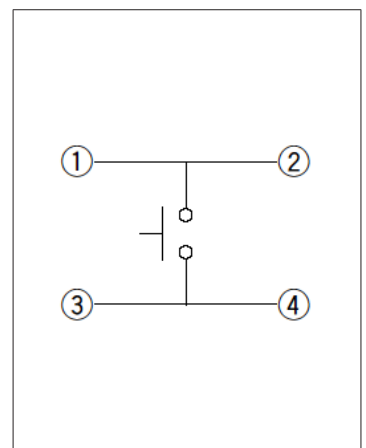
## ■ Dimensions



## ■ Mounting Hole Dimensions



## ■ Circuit Diagram



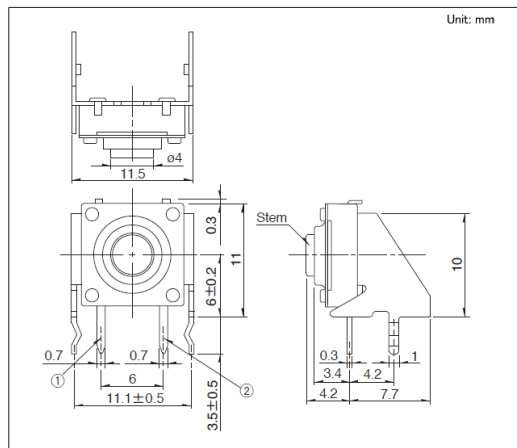
Viewed from mounting face.

## TACT Switch™ Snap-in Type

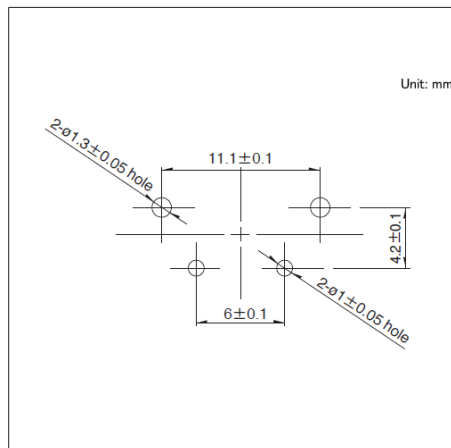
10mm Square (Snap-in)  
SKQB Series

## Drawing No.4

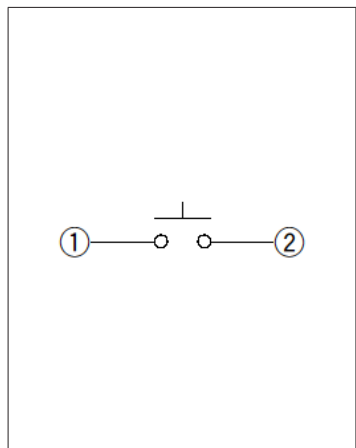
## ■ Dimensions



## ■ Mounting Hole Dimensions



## ■ Circuit Diagram



Viewed from mounting face.