

# TACT Switch™ Snap-in Type

## 6.0mm Square Dust-proof (Snap-in) SKHW Series

Supports a wide range of devices with unique dust-proof structure and sharp operation feel.



 Dust-proof Type

- Series type: Sharp feeling type
- Rating (max.): 50mA 12V DC
- Rating (min.): 10μA 1V DC

Applications: Energy\_Industrial: Industrial equipment  
Healthcare: Healthcare equipment, Analysis, test equipment  
Home: Major home appliances, Office equipment  
Audio\_TV: Visual, Audio, Pro audio

### ■ Product List

| Products No. | Operating direction | Operating force (N) | Travel (mm) | Operating life (cycles) | Initial contact resistance | Dimensions (W×D×H) (mm) | Water-proof | Dust-proof | Automotive | Drawing No. |
|--------------|---------------------|---------------------|-------------|-------------------------|----------------------------|-------------------------|-------------|------------|------------|-------------|
| SKHWALA010   | Top push            | 1.57                | 0.3         | 1,000,000               | 100mΩ max.                 | 6.0×6.0×4.3             | —           | ●          | —          | 1           |
| SKHWARA010   | Top push            | 2.55                | 0.3         | 500,000                 | 100mΩ max.                 | 6.0×6.0×4.3             | —           | ●          | —          |             |
| SKHWAPA010   | Top push            | 1.57                | 0.3         | 1,000,000               | 100mΩ max.                 | 6.0×6.0×5.0             | —           | ●          | —          | 2           |
| SKHWAQA010   | Top push            | 2.55                | 0.3         | 500,000                 | 100mΩ max.                 | 6.0×6.0×5.0             | —           | ●          | —          |             |

### ⚠ Note

1. This catalog shows only outline specifications. When using the products, please obtain formal specifications for supply.
2. Please use 1.6mm thick PC boards.
3. Please place purchase orders per minimum order unit (integer).

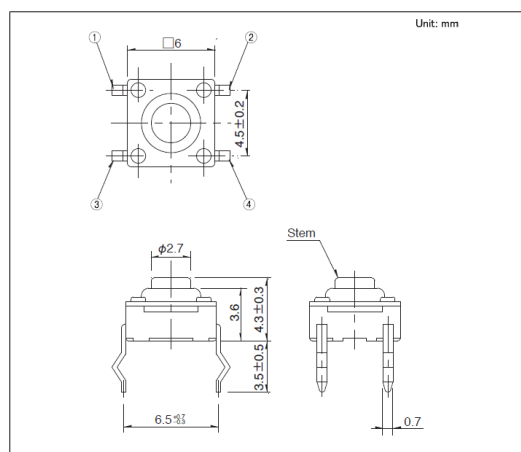
### ■ Packing Specifications

#### Bulk

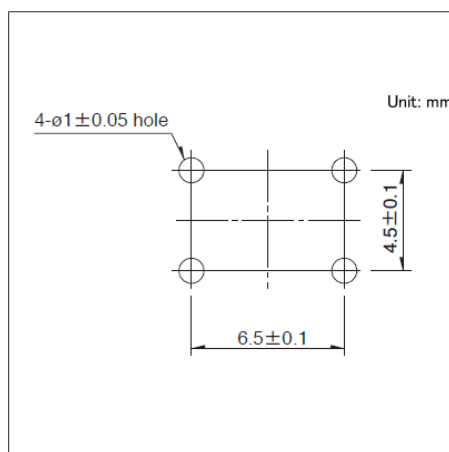
| Number of packages (pcs.) |                         | Export package measurements (mm) |
|---------------------------|-------------------------|----------------------------------|
| 1 case / Japan            | 1 case / export packing |                                  |
| 10,000                    | 30,000                  | 309 x 476 x 347                  |

### Drawing No. 1

#### ■ Dimensions

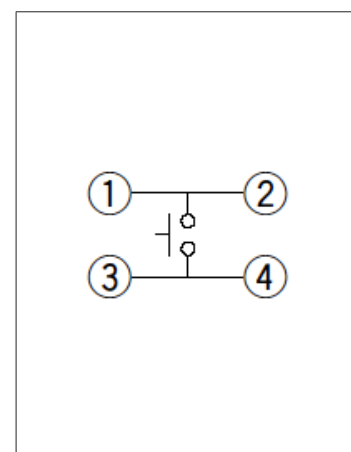


#### ■ Mounting Hole Dimensions



Viewed from mounting face.

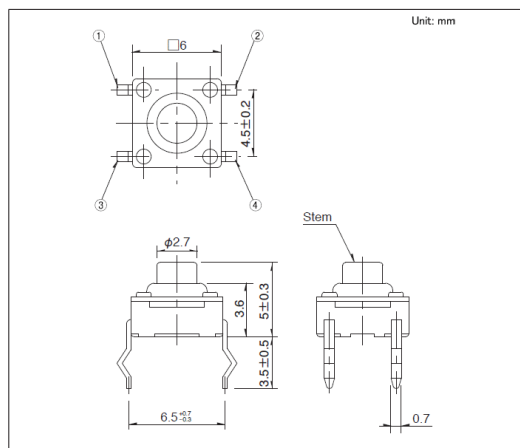
#### ■ Circuit Diagram



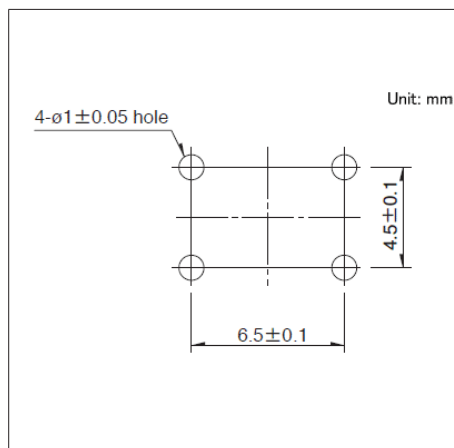
**TACT Switch™** Snap-in Type  
**6.0mm Square Dust-proof (Snap-in)**  
**SKHW Series**

**Drawing No.2**

■ Dimensions



■ Mounting Hole Dimensions



Viewed from mounting face.

■ Circuit Diagram

