

# TACT Switch™ Snap-in Type

## 6.0mm Square (Snap-in) SKHH Series

Renowned for ease of use and wide product variety in a 6.0mm square type.

 Automotive

※Please check the product list for compatible products

- Series type: Sharp feeling type
- Rating (max.): 50mA 12V DC
- Rating (min.): 10μA 1V DC

Applications: Energy\_Industrial: Industrial equipment  
Healthcare: Healthcare equipment, Analysis, test equipment  
Home: Office equipment  
Audio\_TV: Visual, Audio, Pro audio  
Automotive: Navigation/audio systems, HVAC

### ■ Product List

Products No.	Type	Operating direction	Operating force (N)	Travel (mm)	Operating life (cycles)	Initial contact resistance	Dimensions (W×D×H) (mm)	Water-proof	Dust-proof	Automotive	Drawing No.
SKHHAJA010	Top push type	Top push	0.98	0.25	1,000,000	100mΩ max.	6.0×6.0×4.3	—	—	●	1
SKHHALA010		Top push	1.57	0.25	500,000	100mΩ max.	6.0×6.0×4.3	—	—	●	
SKHHAQA010		Top push	2.55	0.25	200,000	100mΩ max.	6.0×6.0×4.3	—	—	●	
SKHHAKA010		Top push	0.98	0.25	1,000,000	100mΩ max.	6.0×6.0×5.0	—	—	●	2
SKHHAMA010		Top push	1.57	0.25	500,000	100mΩ max.	6.0×6.0×5.0	—	—	●	
SKHHARA010		Top push	2.55	0.25	200,000	100mΩ max.	6.0×6.0×5.0	—	—	●	
SKHHCQA010		Top push	3.53	0.25	200,000	100mΩ max.	6.0×6.0×5.0	—	—	●	
SKHHCRA010		Top push	5.10	0.25	200,000	100mΩ max.	6.0×6.0×5.0	—	—	●	
SKHHBVA010		Top push	0.98	0.25	1,000,000	100mΩ max.	6.0×6.0×7.0	—	—	●	3
SKHHBWA010		Top push	1.57	0.25	500,000	100mΩ max.	6.0×6.0×7.0	—	—	●	
SKHHBYA010		Top push	2.55	0.25	200,000	100mΩ max.	6.0×6.0×7.0	—	—	●	
SKHHANA010		Top push	0.98	0.25	1,000,000	100mΩ max.	6.0×6.0×9.5	—	—	●	4
SKHHAPA010		Top push	1.57	0.25	500,000	100mΩ max.	6.0×6.0×9.5	—	—	●	
SKHHBSA010		Top push	2.55	0.25	200,000	100mΩ max.	6.0×6.0×9.5	—	—	●	
SKHHDTA010		Top push	0.98	0.25	1,000,000	100mΩ max.	6.0×6.0×13.0	—	—	●	5
SKHHDUA010		Top push	1.57	0.25	500,000	100mΩ max.	6.0×6.0×13.0	—	—	●	
SKHHDHA010		Top push	0.98	0.25	500,000	100mΩ max.	6.0×6.0×17.0	—	—	●	6
SKHHDJA010		Top push	1.57	0.25	300,000	100mΩ max.	6.0×6.0×17.0	—	—	●	
SKHHCWA010	Joint stem type	Top push	0.98	0.25	1,000,000	100mΩ max.	6.0×6.0×7.3	—	—	●	7
SKHHDAA010		Top push	1.57	0.25	500,000	100mΩ max.	6.0×6.0×7.3	—	—	●	
SKHHDGA010		Top push	2.55	0.25	200,000	100mΩ max.	6.0×6.0×7.3	—	—	●	

## TACT Switch™ Snap-in Type

6.0mm Square (Snap-in)  
SKHH Series

Products No.	Type	Operating direction	Operating force (N)	Travel (mm)	Operating life (cycles)	Initial contact resistance	Dimensions (W×D×H) (mm)	Water-proof	Dust-proof	Automotive	Drawing No.
SKHHPJA010	With ground terminal type	Top push	0.98	0.25	1,000,000	100mΩ max.	6.0×6.0×4.3	—	—	●	8
SKHHPLA010		Top push	1.57	0.25	500,000	100mΩ max.	6.0×6.0×4.3	—	—	●	
SKHHPQA010		Top push	2.55	0.25	200,000	100mΩ max.	6.0×6.0×4.3	—	—	●	
SKHHPKA010		Top push	0.98	0.25	1,000,000	100mΩ max.	6.0×6.0×5.0	—	—	●	9
SKHHPMA010		Top push	1.57	0.25	500,000	100mΩ max.	6.0×6.0×5.0	—	—	●	
SKHHPra010		Top push	2.55	0.25	200,000	100mΩ max.	6.0×6.0×5.0	—	—	●	
SKHHQVA010		Top push	0.98	0.25	1,000,000	100mΩ max.	6.0×6.0×7.0	—	—	●	10
SKHHQWA010		Top push	1.57	0.25	500,000	100mΩ max.	6.0×6.0×7.0	—	—	●	
SKHHQYA010		Top push	2.55	0.25	200,000	100mΩ max.	6.0×6.0×7.0	—	—	●	
SKHHPNA010		Top push	0.98	0.25	1,000,000	100mΩ max.	6.0×6.0×9.5	—	—	●	11
SKHHPPA010		Top push	1.57	0.25	500,000	100mΩ max.	6.0×6.0×9.5	—	—	●	
SKHHQNA010		Top push	2.55	0.25	200,000	100mΩ max.	6.0×6.0×9.5	—	—	●	
SKHHLMA010	Side push type	Side push	0.98	0.25	1,000,000	100mΩ max.	6.2×7.85×7.1	—	—	—	12
SKHHLNA010		Side push	1.57	0.25	500,000	100mΩ max.	6.2×7.85×7.1	—	—	—	
SKHHLPA010		Side push	2.55	0.25	200,000	100mΩ max.	6.2×7.85×7.1	—	—	—	
SKHHLQA010		Side push	0.98	0.25	1,000,000	100mΩ max.	6.2×12.35×7.1	—	—	—	13
SKHHLRA010		Side push	1.57	0.25	500,000	100mΩ max.	6.2×12.35×7.1	—	—	—	
SKHHLSA010		Side push	2.55	0.25	200,000	100mΩ max.	6.2×12.35×7.1	—	—	—	
SKHHLUA010		Side push	0.98	0.25	1,000,000	100mΩ max.	6.2×9.85×7.1	—	—	—	14
SKHHLVA010		Side push	1.57	0.25	500,000	100mΩ max.	6.2×9.85×7.1	—	—	—	
SKHHLWA010		Side push	2.55	0.25	200,000	100mΩ max.	6.2×9.85×7.1	—	—	—	
SKHHNHA010		Side push	0.98	0.25	500,000	100mΩ max.	6.2×19.85×7.1	—	—	—	15
SKHHNJA010		Side push	1.57	0.25	300,000	100mΩ max.	6.2×19.85×7.1	—	—	—	
SKHHNKA010		Side push	2.55	0.25	200,000	100mΩ max.	6.2×19.85×7.1	—	—	—	

## ⚠ Note

1. This catalog shows only outline specifications. When using the products, please obtain formal specifications for supply.
2. Please use 1.6mm thick PC boards.
3. Please place purchase orders per minimum order unit (integer).

## TACT Switch™ Snap-in Type

6.0mm Square (Snap-in)

## SKHH Series

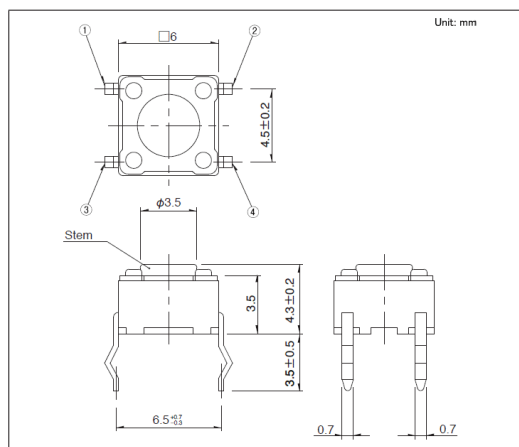
## ■ Packing Specifications

Bulk

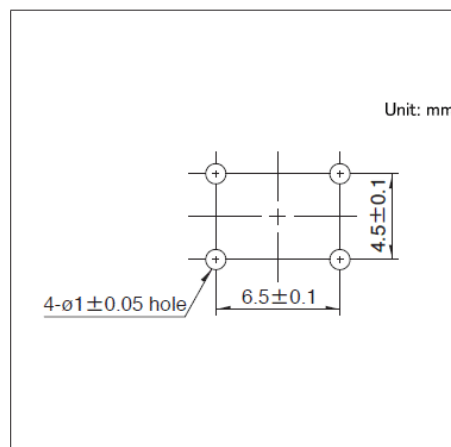
Products No.	Number of packages(pcs.)		Export package measurements (mm)
	1 case / Japan	1 case / export packing	
SKHHAJA010 SKHHALA010 SKHHAQA010 SKHHAKA010 SKHHAMA010 SKHHARA010 SKHHCQA010 SKHHCRA010 SKHHBVA010 SKHHBWA010 SKHHBYA010 SKHHANA010 SKHHAPA010 SKHHBSA010 SKHHCWA010 SKHHDAA010 SKHHDGA010 SKHHPJA010 SKHHPLA010 SKHHPQA010 SKHHPKA010 SKHHPMA010 SKHHPRA010 SKHHQVA010 SKHHQWA010 SKHHQYA010 SKHHPNA010 SKHHPPA010 SKHHQNA010 SKHHLMA010 SKHHLNA010 SKHHLPA010 SKHHLQA010 SKHHLRA010 SKHHLSA010 SKHHLUA010 SKHHLVA010 SKHHLWA010	10,000	30,000	309 x 476 x 347
SKHHDTA010 SKHHDUA010 SKHHDHA010 SKHHDJA010 SKHHNHA010 SKHHNJA010 SKHHNKA010	5,000	15,000	309 x 476 x 347

## Drawing No.1

## ■ Dimensions

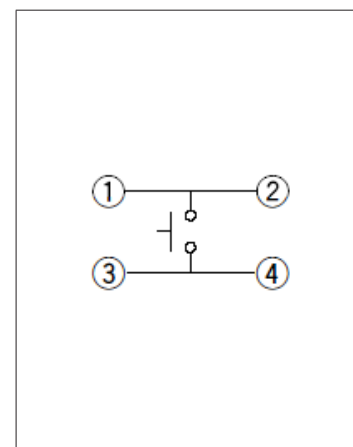


## ■ Mounting Hole Dimensions



Viewed from mounting face.

## ■ Circuit Diagram



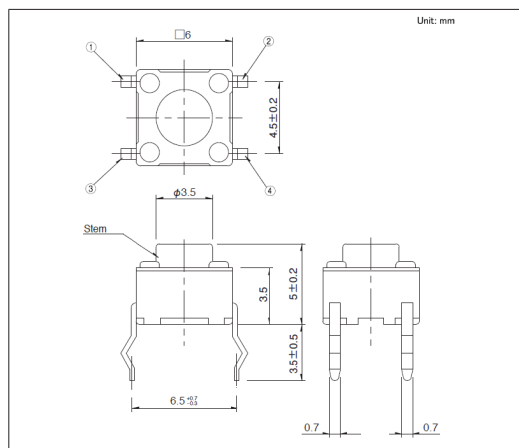
# TACT Switch™ Snap-in Type

## 6.0mm Square (Snap-in)

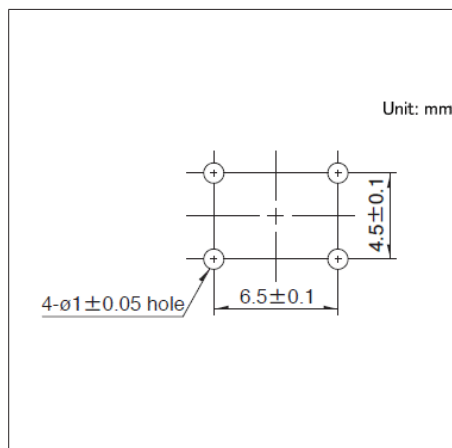
### SKHH Series

#### Drawing No.2

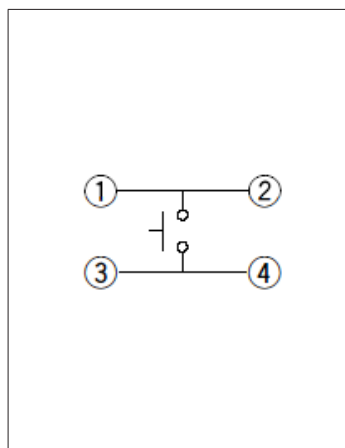
##### ■ Dimensions



##### ■ Mounting Hole Dimensions



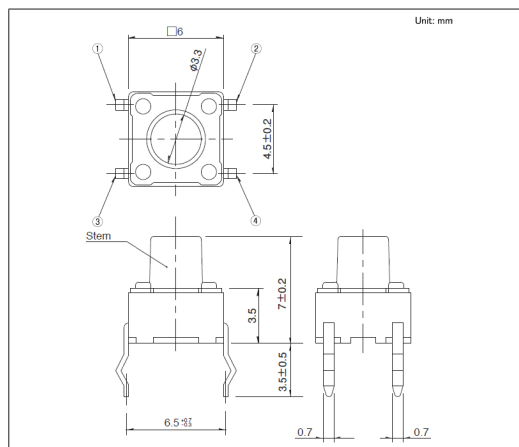
##### ■ Circuit Diagram



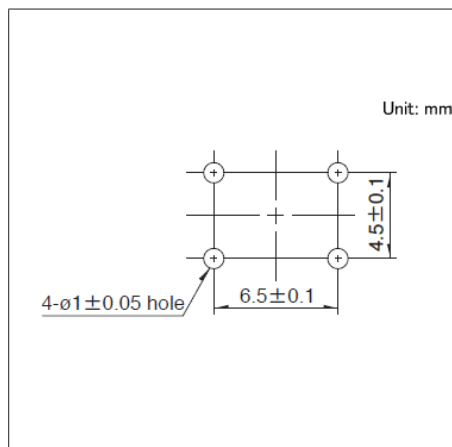
Viewed from mounting face.

#### Drawing No.3

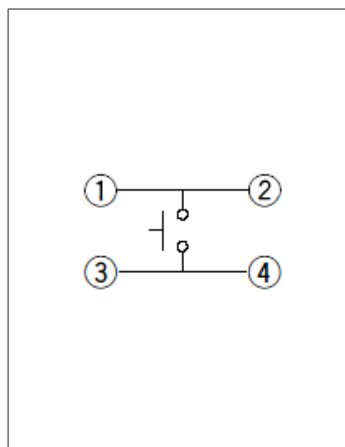
##### ■ Dimensions



##### ■ Mounting Hole Dimensions



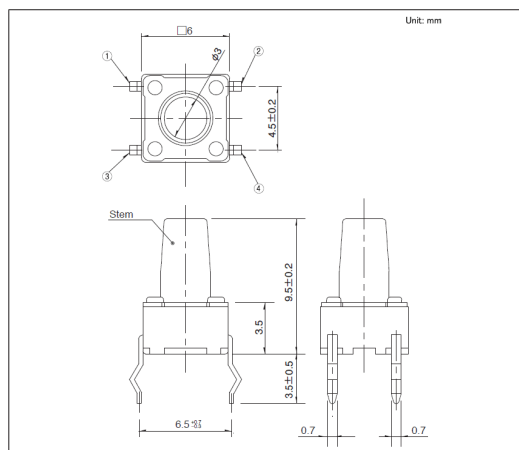
##### ■ Circuit Diagram



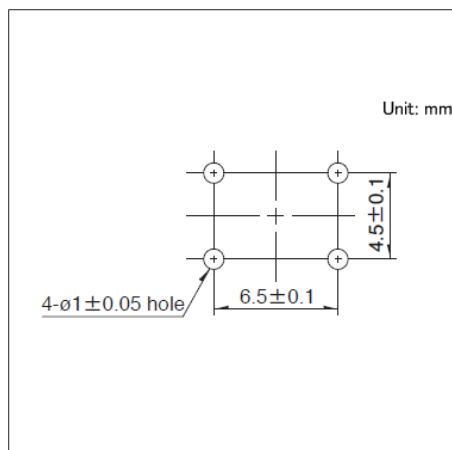
Viewed from mounting face.

#### Drawing No.4

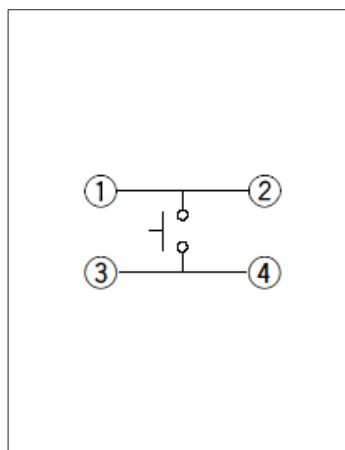
##### ■ Dimensions



##### ■ Mounting Hole Dimensions



##### ■ Circuit Diagram



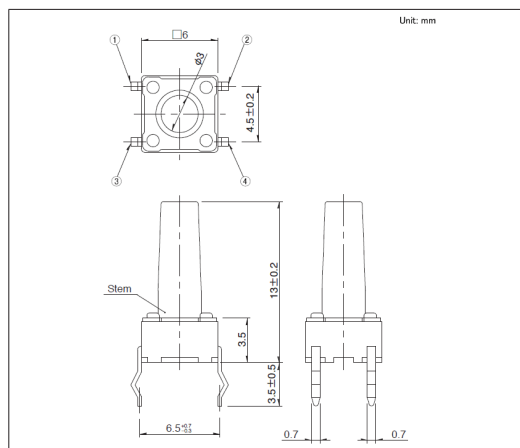
Viewed from mounting face.

## TACT Switch™ Snap-in Type

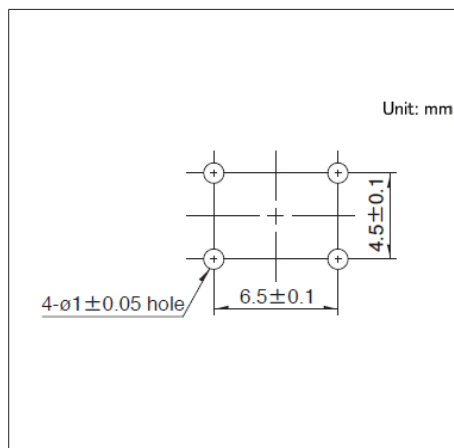
6.0mm Square (Snap-in)  
SKHH Series

## Drawing No.5

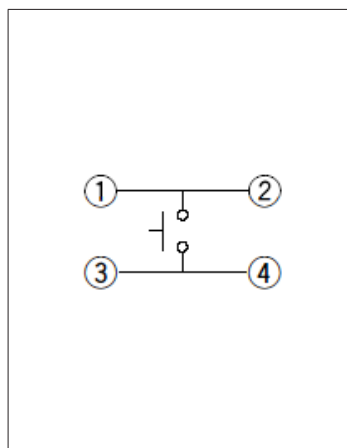
## ■ Dimensions



## ■ Mounting Hole Dimensions



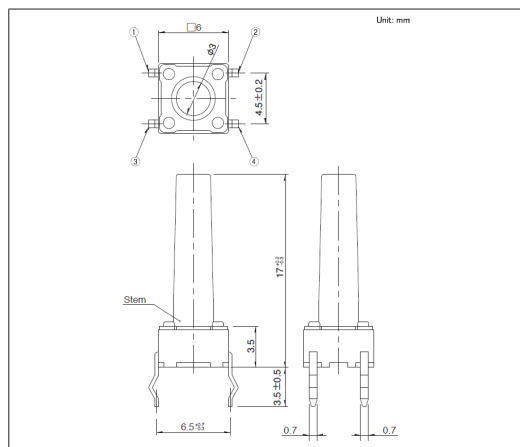
## ■ Circuit Diagram



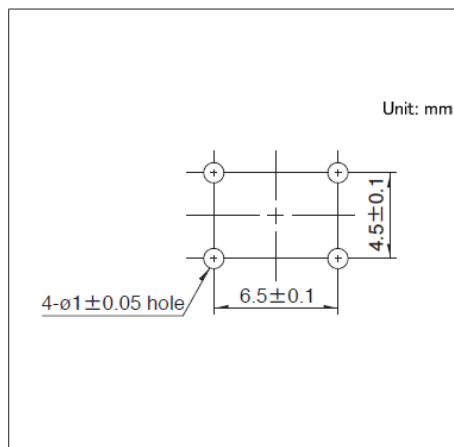
Viewed from mounting face.

## Drawing No.6

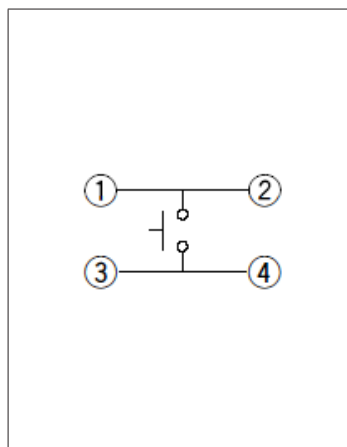
## ■ Dimensions



## ■ Mounting Hole Dimensions



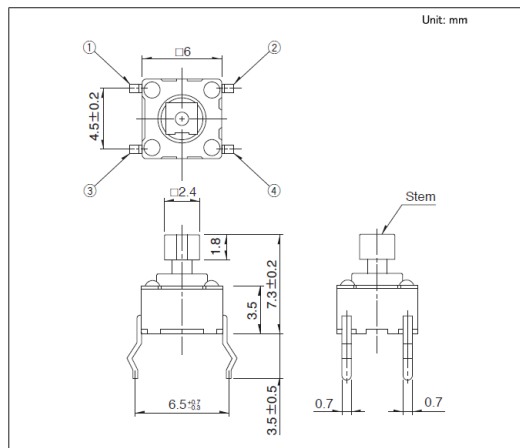
## ■ Circuit Diagram



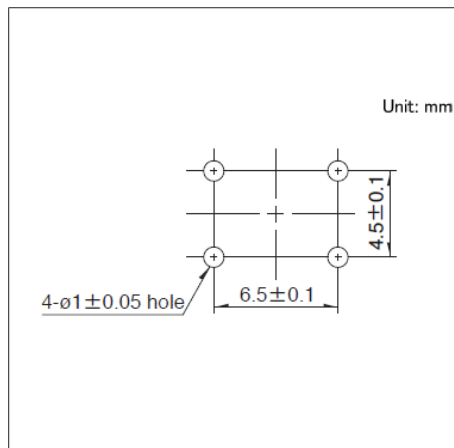
Viewed from mounting face.

## Drawing No.7

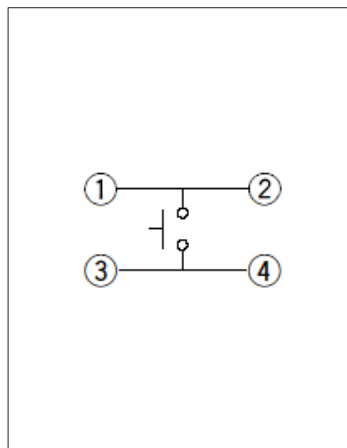
## ■ Dimensions



## ■ Mounting Hole Dimensions



## ■ Circuit Diagram



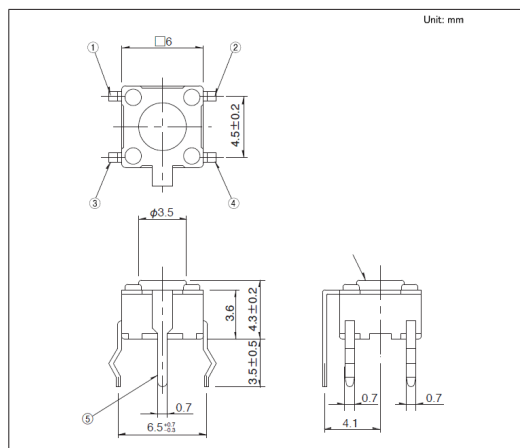
Viewed from mounting face.

## TACT Switch™ Snap-in Type

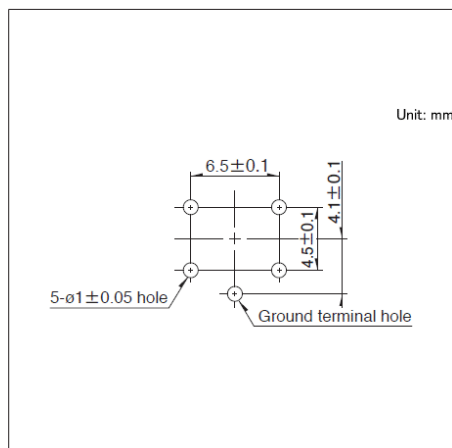
6.0mm Square (Snap-in)  
SKHH Series

## Drawing No.8

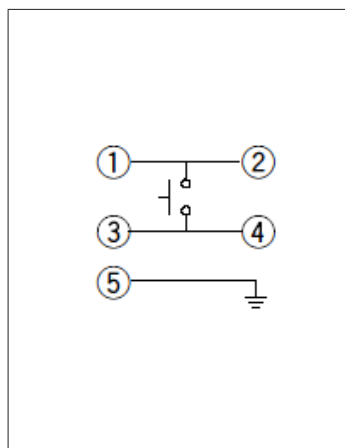
## ■ Dimensions



## ■ Mounting Hole Dimensions



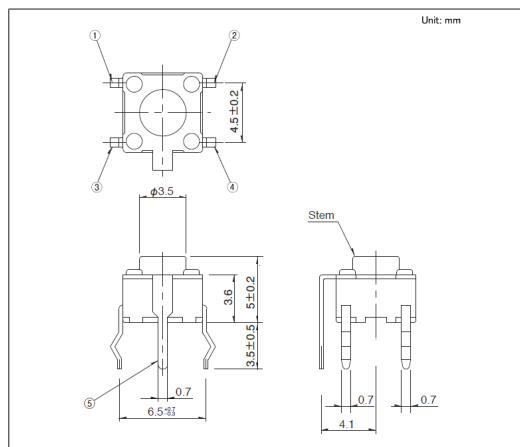
## ■ Circuit Diagram



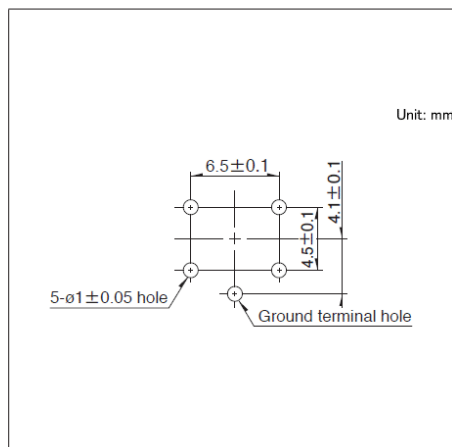
Viewed from mounting face.

## Drawing No.9

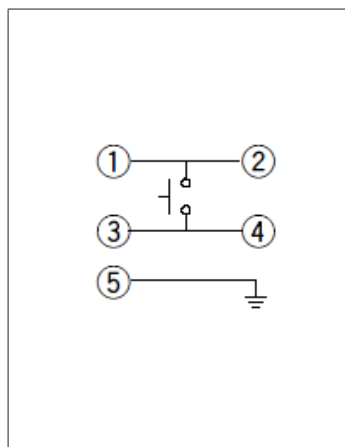
## ■ Dimensions



## ■ Mounting Hole Dimensions



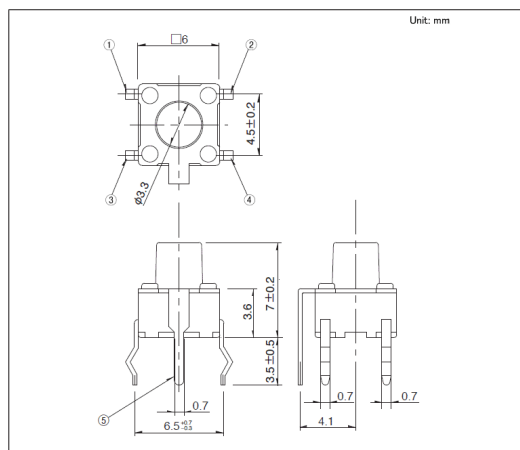
## ■ Circuit Diagram



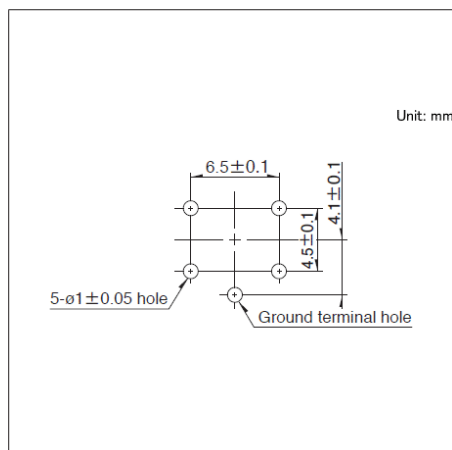
Viewed from mounting face.

## Drawing No.10

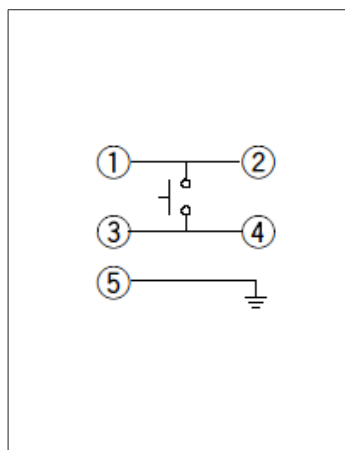
## ■ Dimensions



## ■ Mounting Hole Dimensions



## ■ Circuit Diagram



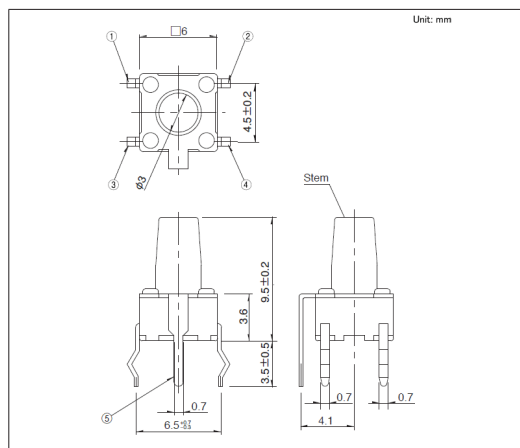
Viewed from mounting face.

## TACT Switch™ Snap-in Type

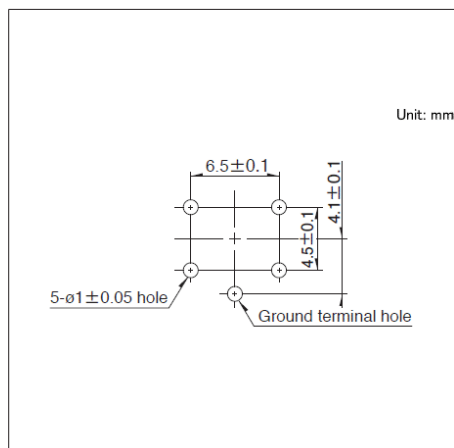
6.0mm Square (Snap-in)  
SKHH Series

## Drawing No.11

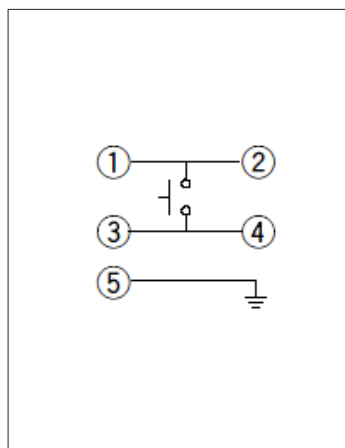
## ■ Dimensions



## ■ Mounting Hole Dimensions



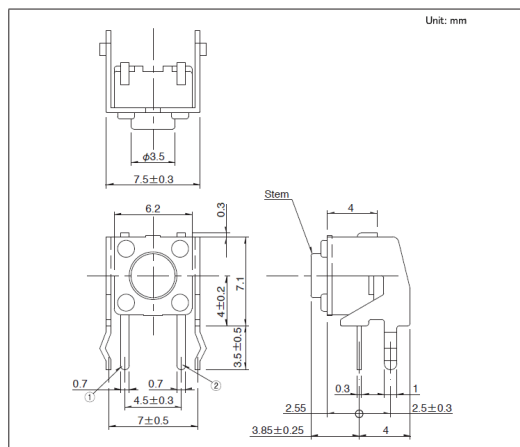
## ■ Circuit Diagram



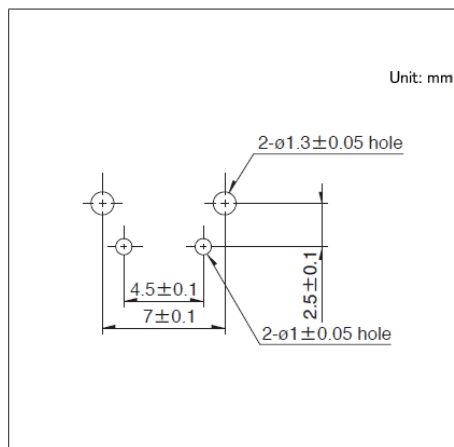
Viewed from mounting face.

## Drawing No.12

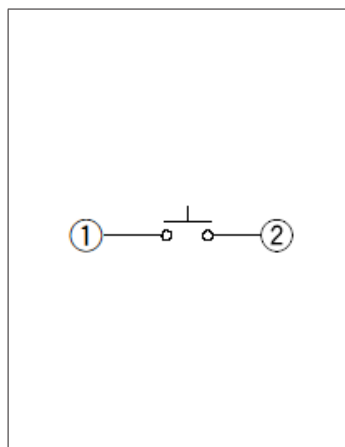
## ■ Dimensions



## ■ Mounting Hole Dimensions



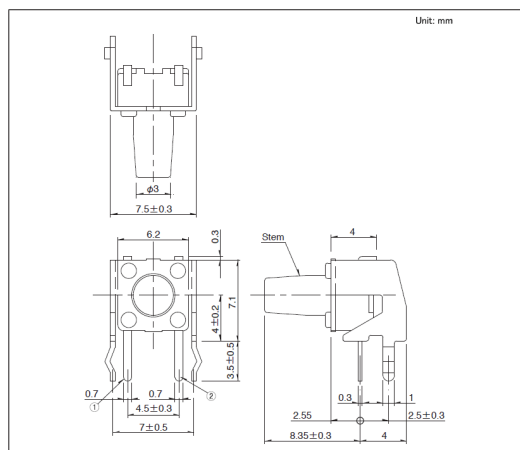
## ■ Circuit Diagram



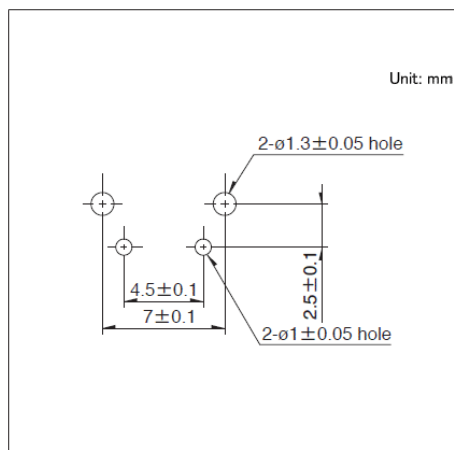
Viewed from mounting face.

## Drawing No.13

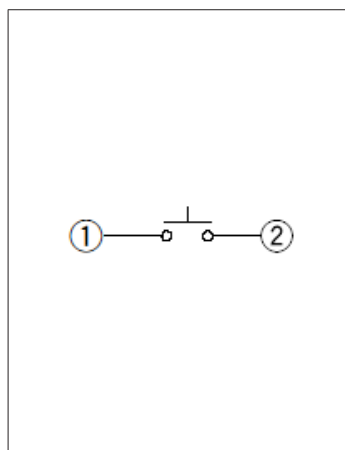
## ■ Dimensions



## ■ Mounting Hole Dimensions



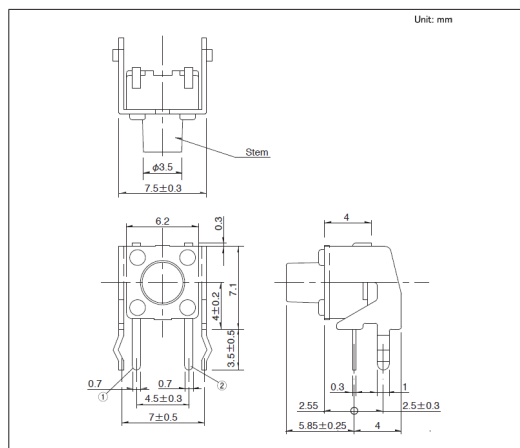
## ■ Circuit Diagram



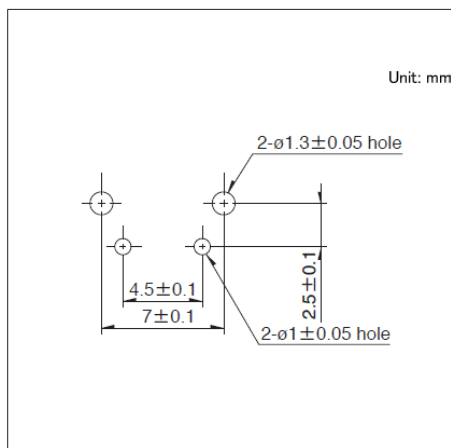
Viewed from mounting face.

## Drawing No.14

## ■ Dimensions

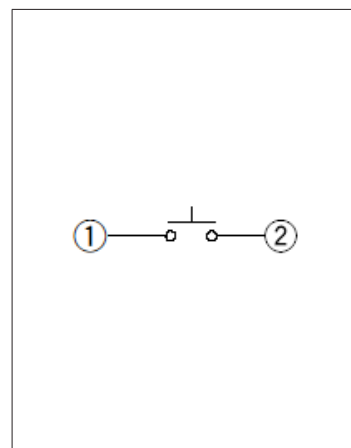


### ■ Mounting Hole Dimensions



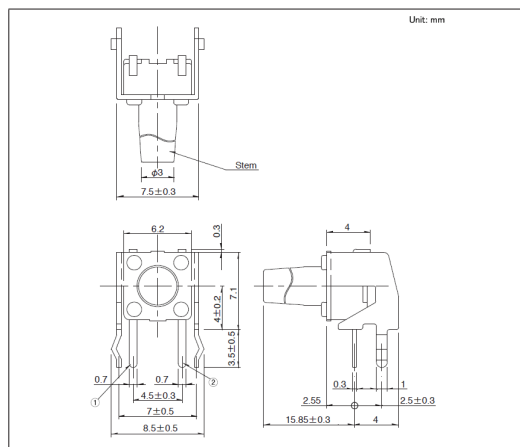
Viewed from mounting face.

- Circuit Diagram

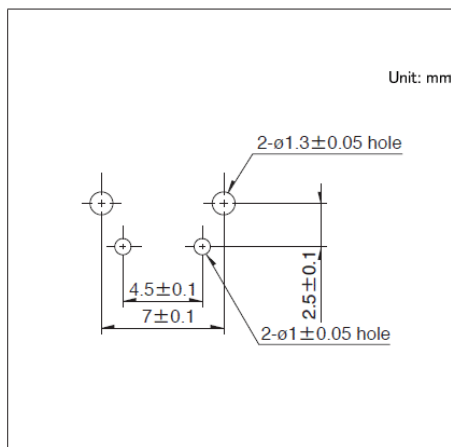


## Drawing No.15

## ■ Dimensions



### ■ Mounting Hole Dimensions



Viewed from mounting face.

- Circuit Diagram

