

TACT Switch™ Snap-in Type

12mm Square (Snap-in)
SKHC Series

Features stable operation feel with joint stem and flat stem designs.



- Series type: Sharp feeling type
- Rating (max.): 50mA 12V DC
- Rating (min.): 10μA 1V DC

Applications: Energy_Industrial: Industrial equipment
Home: Office equipment

■ Product List

Products No.	Operating direction	Operating force (N)	Travel (mm)	Operating life (cycles)	Initial contact resistance	Stem	Dimensions (W×D×H) (mm)	Water-proof	Dust-proof	Automotive	Drawing No.
SKHCBJA010	Top push	0.74	0.3	500,000	100mΩ max.	Joint stem	12.0×12.0×7.3	—	—	—	1
SKHCBEA010	Top push	1.27	0.3	1,000,000	100mΩ max.	Joint stem	12.0×12.0×7.3	—	—	—	
SKHCBLA010	Top push	1.27	0.3	3,000,000	100mΩ max.	Joint stem	12.0×12.0×7.3	—	—	—	
SKHCBGA010	Top push	2.55	0.3	500,000	100mΩ max.	Joint stem	12.0×12.0×7.3	—	—	—	
SKHCBKA010	Top push	0.74	0.3	500,000	100mΩ max.	Flat stem	12.0×12.0×4.3	—	—	—	2
SKHCBFA010	Top push	1.27	0.3	1,000,000	100mΩ max.	Flat stem	12.0×12.0×4.3	—	—	—	
SKHCBMA010	Top push	1.27	0.3	3,000,000	100mΩ max.	Flat stem	12.0×12.0×4.3	—	—	—	
SKHCBHA010	Top push	2.55	0.3	500,000	100mΩ max.	Flat stem	12.0×12.0×4.3	—	—	—	

⚠ Note

1. This catalog shows only outline specifications. When using the products, please obtain formal specifications for supply.
2. Please use 1.6mm thick PC boards.
3. Please place purchase orders per minimum order unit (integer).

■ Packing Specifications

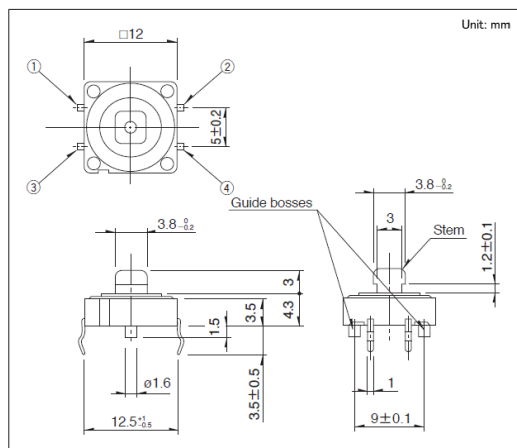
Bulk

Number of packages(pcs.)		Export package measurements (mm)
1 case / Japan	1 case / export packing	
5,000	15,000	309 x 476 x 347

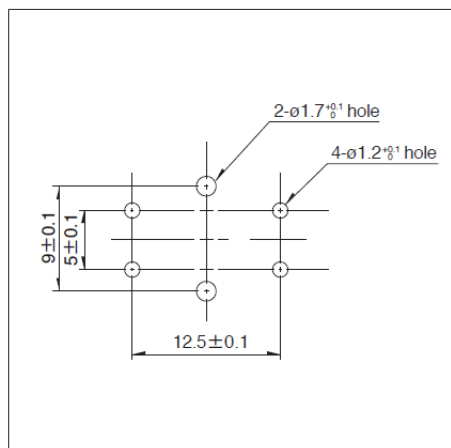
12mm Square (Snap-in) SKHC Series

Drawing No.1

■ Dimensions

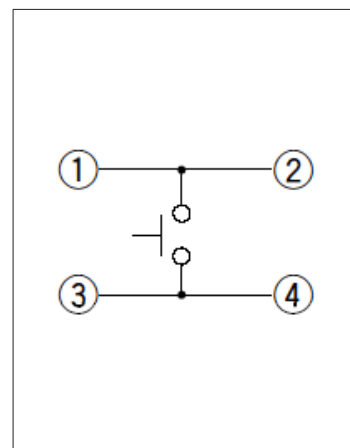


■ Mounting Hole Dimensions



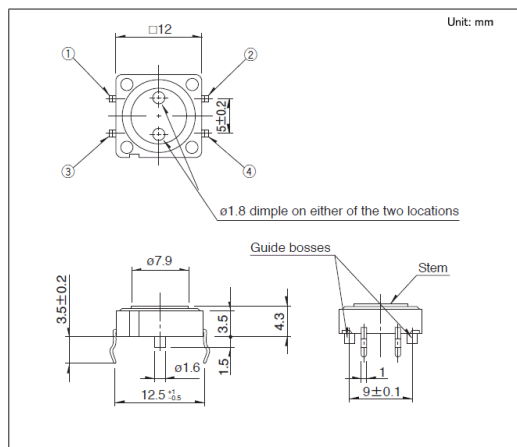
Viewed from mounting face.

- Circuit Diagram

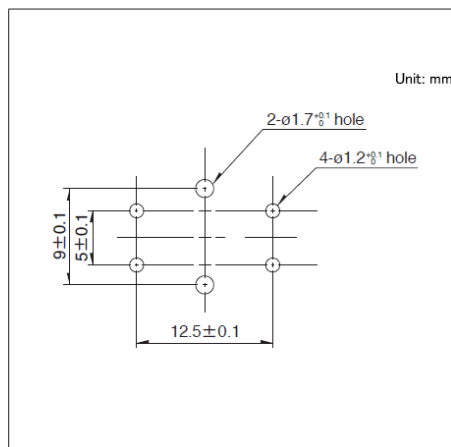


Drawing No.2

■ Dimensions



■ Mounting Hole Dimensions



Viewed from mounting face.

- Circuit Diagram

