

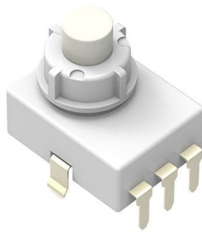
Switches

Push Switches

3.8mm-travel Push-push Type

SPED4 Series

Provides smooth and linear operation feel.



Automotive

- Rating (max.)/(min.) (Resistive load): 2A 14.5V DC/ -
- Contact resistance (Initial performance/After lifetime):
100mΩ max./100mΩ max.
- Operating life with load (at max. rated load): 30,000 cycles 100mΩ max.

Applications: Automotive: Map Lamp

■ Product List

Products No.	Total travel (mm)	Poles	Positions	Operating force	Changeover timing	Mounting method	Operation	Terminal type	Dimensions (W×D×H) (mm)	Automotive	Drawing No.
SPED420200	3.8	1	2	4.17±0.74N	Non shorting	PC board	Alternate	For PC board	18.0×14.0×7.27	●	1

Note

1. This catalog shows only outline specifications. When using the products, please obtain formal specifications for supply.
2. Please place purchase orders per minimum order unit (integer).
3. This products can be used in vehicles.
Although these products are designed to perform over a wide operating temperature range, please ensure that you receive and read the formal delivery specifications before use.

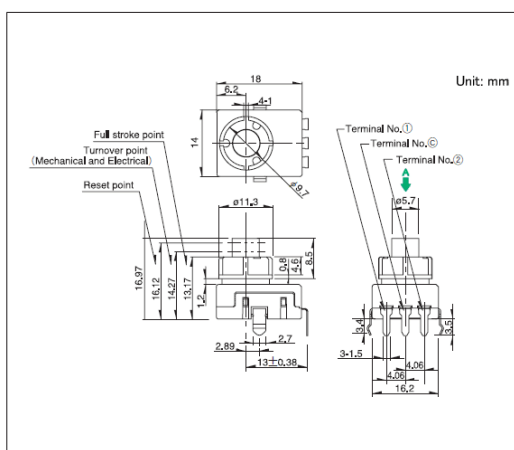
■ Packing Specifications

Tray

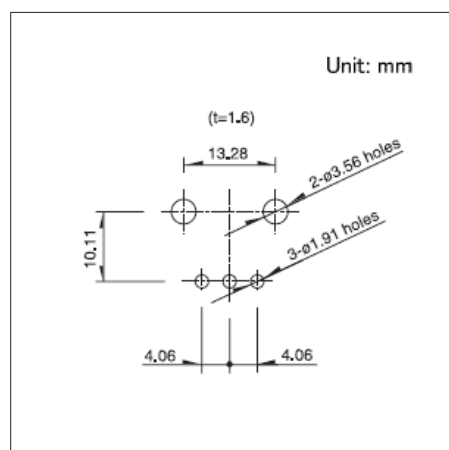
Number of packages(pcs.)		Export package measurements (mm)
1 case / Japan	1 case / export packing	
280	1,120	555 x 375 x 223

Drawing No.1

■ Dimensions

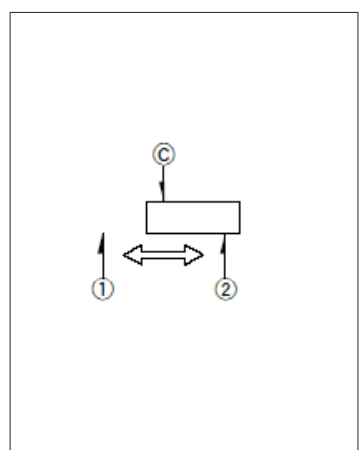


■ Mounting Hole Dimensions



Viewed from direction A in the dimensions.

■ Circuit Diagram



Factory setting for contact points can be either 1 or 2.