

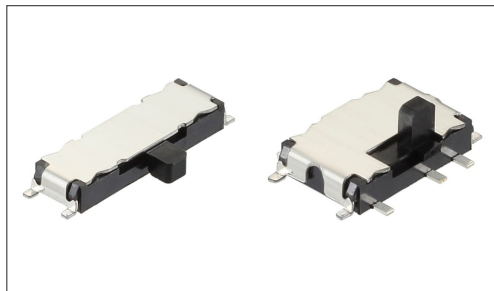
## Switches

## Slide Switches

1.4 (H) mm, 1.5/2.0mm-travel (Surface Mount)

**SSSS8 Series**

Thin-profile type with a body height of 1.4mm.



- Rating (max.)/(min.) (Resistive load): 0.3A 5V DC/50μA 3V DC
- Contact resistance (Initial performance/After lifetime):  
70mΩ max./130mΩ max.
- Operating life without load: 10,000 cycles 100mΩ max.
- Operating life with load (at max. rated load): 10,000 cycles 130mΩ max.

Applications: Mobile: Smartphones, tablets, Headsets, wearables,  
Notebooks, peripherals  
Energy\_Industrial: Robots, drones, Industrial equipment,  
Converters  
Game: Home handheld consoles, Virtual/augmented reality  
Healthcare: Healthcare equipment, Nursing care equipment,  
Analysis, test equipment  
Audio\_TV: Audio, Cameras

## ■ Product List

Products No.	Actuator directions	Travel (mm)	Poles	Positions	Operating force	Changeover timing	Ground terminal	Soldering	Dimensions (W×D×H) (mm)	Automotive	Drawing No.
<b>SSSS820101</b>	Vertical	1.5	2	2	Refer to the dimensions	Not specified	Without	Reflow	6.7×4.1×1.4	—	1
<b>SSSS820301</b>	Vertical	1.5	2	3	Refer to the dimensions	Not specified	Without	Reflow	9.7×4.1×1.4	—	2
<b>SSSS820201</b>	Vertical	1.5	2	2	Refer to the dimensions	Not specified	With	Reflow	6.7×4.1×1.4	—	3
<b>SSSS820501</b>	Vertical	1.5	2	3	Refer to the dimensions	Not specified	With	Reflow	9.7×4.1×1.4	—	4
<b>SSSS810701</b>	Horizontal	1.5	1	2	Refer to the dimensions	Not specified	Without	Reflow	6.7×2.6×1.4	—	5
<b>SSSS811501</b>	Horizontal	1.5	1	3	Refer to the dimensions	Not specified	Without	Reflow	9.7×2.6×1.4	—	6
<b>SSSS811101</b>	Horizontal	1.5	1	2	Refer to the dimensions	Not specified	With	Reflow	6.7×2.6×1.4	—	7
<b>SSSS812201</b>	Horizontal	1.5	1	3	Refer to the dimensions	Not specified	With	Reflow	9.7×2.6×1.4	—	8
<b>SSSS810201</b>	Horizontal	2.0	1	2	Refer to the dimensions	Not specified	With	Reflow	9.7×2.6×1.4	—	9

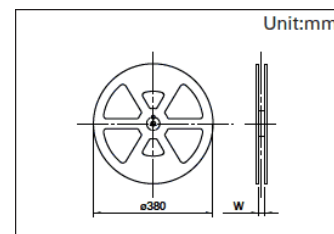
## ⚠ Note

1. This catalog shows only outline specifications. When using the products, please obtain formal specifications for supply.
2. Please place purchase orders for taping products per minimum order unit (1 reel or a case).

## ■ Packing Specifications

## Taping

Products No.	Number of packages(pcs.)			Tape width (mm)	Export package measurements (mm)
	1 reel	1 case / Japan	1 case / export packing		
<b>SSSS820101</b> <b>SSSS820301</b> <b>SSSS820201</b> <b>SSSS820501</b>	1,800	3,600	7,200	24	406 x 406 x 190
<b>SSSS810701</b> <b>SSSS811501</b> <b>SSSS811101</b> <b>SSSS812201</b> <b>SSSS810201</b>	4,500	9,000	18,000	16	417 x 409 x 139



## Switches

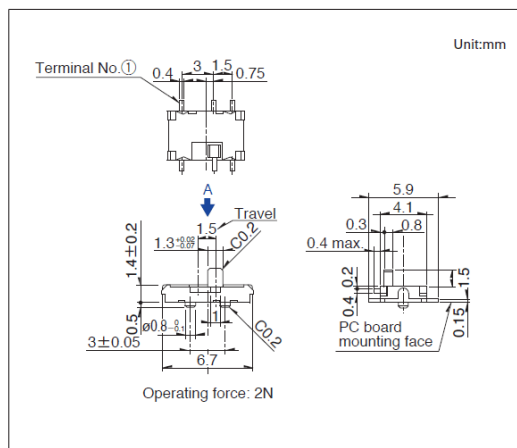
## Slide Switches

1.4 (H) mm, 1.5/2.0mm-travel (Surface Mount)

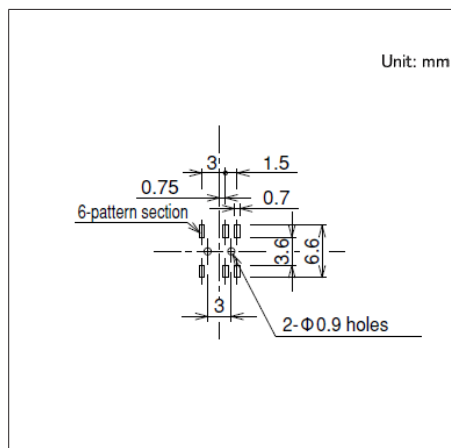
## SSSS8 Series

## Drawing No.1

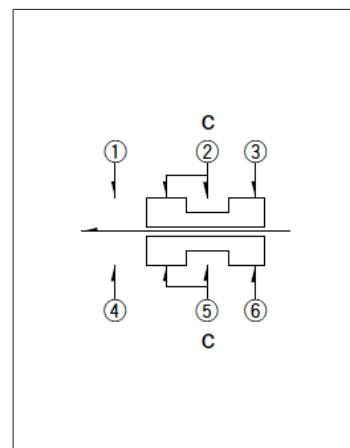
## ■ Dimensions



## ■ Land Dimensions



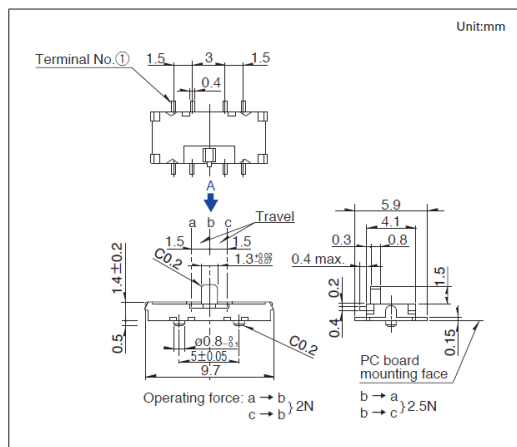
## ■ Circuit Diagram



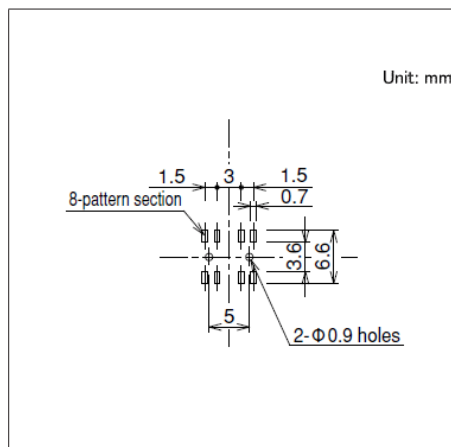
Viewed from direction A in the dimensions.

## Drawing No.2

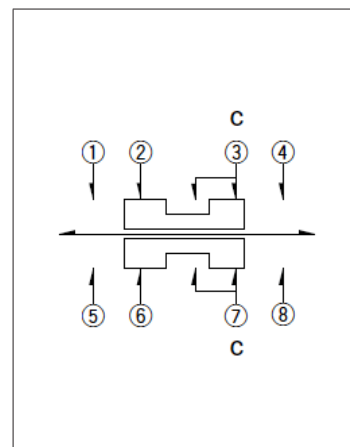
## ■ Dimensions



## ■ Land Dimensions



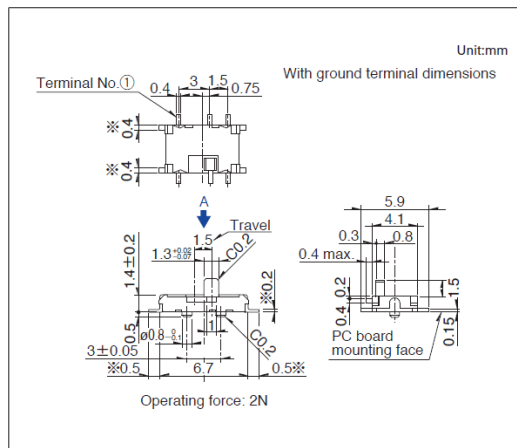
## ■ Circuit Diagram



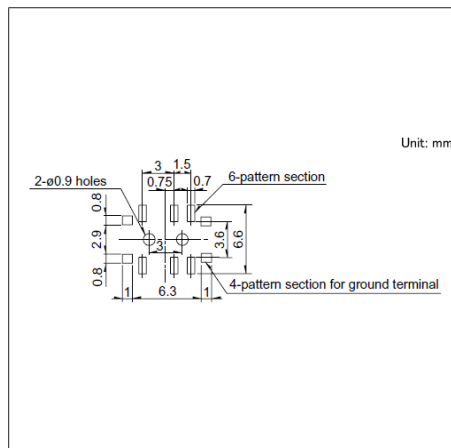
Viewed from direction A in the dimensions.

## Drawing No.3

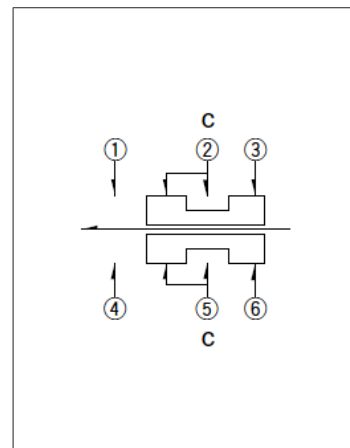
## ■ Dimensions



## ■ Land Dimensions



## ■ Circuit Diagram



Viewed from direction A in the dimensions.

## Switches

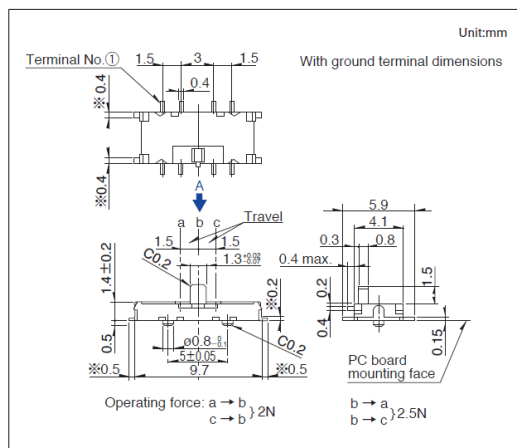
## Slide Switches

1.4 (H) mm, 1.5/2.0mm-travel (Surface Mount)

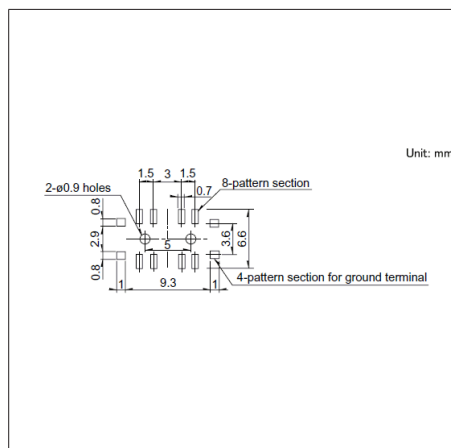
## SSSS8 Series

## Drawing No.4

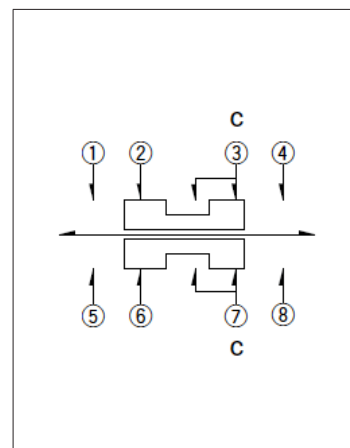
## ■ Dimensions



## ■ Land Dimensions



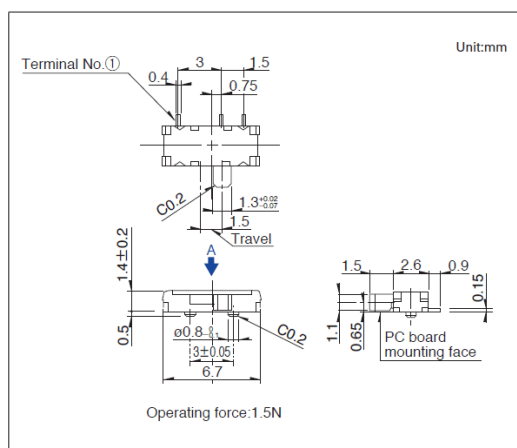
## ■ Circuit Diagram



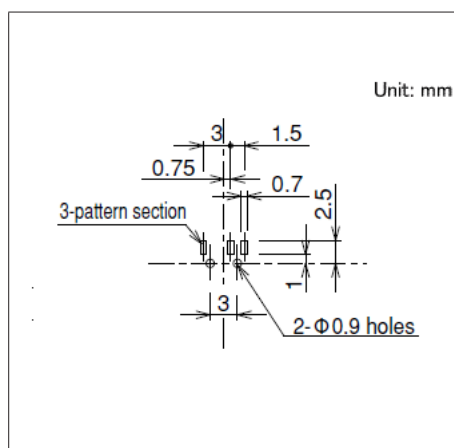
Viewed from direction A in the dimensions.

## Drawing No.5

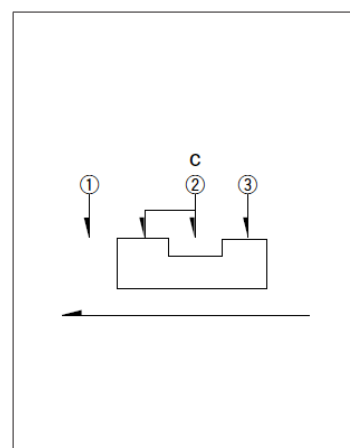
## ■ Dimensions



## ■ Land Dimensions



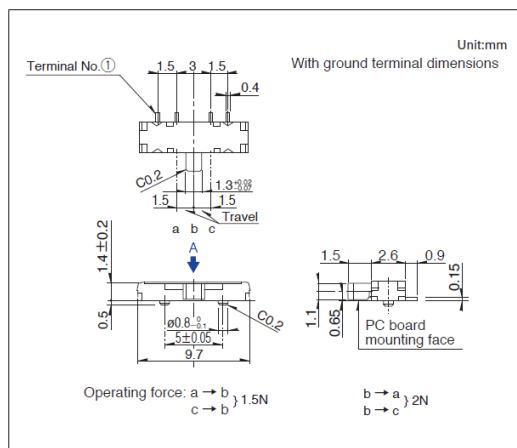
## ■ Circuit Diagram



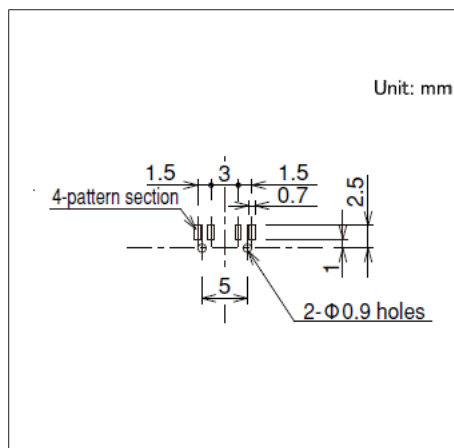
Viewed from direction A in the dimensions.

## Drawing No.6

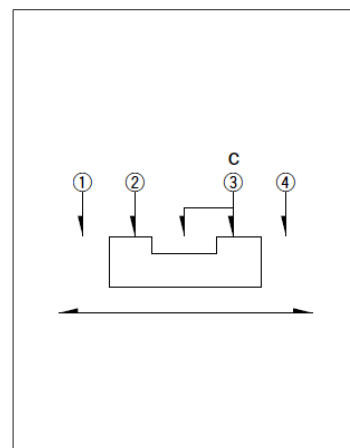
## ■ Dimensions



## ■ Land Dimensions



## ■ Circuit Diagram



Viewed from direction A in the dimensions.

## SSSS8 Series