

Switches

Detector Switches

With Connector Terminal Two-way Operation

SSCZ Series

Connector connection eliminates the need for soldering.



Automotive

- Rating(max.)/(min.)(Resistive load):0.1A 16V DC/100 μ A 3V DC
- Contact resistance(Initial/After operating life):500m Ω max./1 Ω max.
- Operating life without load:300,000 cycles
- Operating life with load Rating(max.)(Resistive load):
300,000 cycles 1 Ω max.

Applications:Automotive:Hood Latch (Side/Rear/Door/Gear)

■ Product List

Products No.	Poles	Positions	Operating force	Terminal type	Dimensions (W×D×H) (mm)	Water-proof	Dust-proof	Automotive	Drawing No.
SSCZ110101	1	2	1.1N max.	Connector type	13.84×5.4×15.4	—	—	●	1

Note

1. This catalog shows only outline specifications. When using the products, please obtain formal specifications for supply.
2. Please place purchase orders per minimum order unit (integer).
3. This products can be used in vehicles.
Although these products are designed to perform over a wide operating temperature range, please ensure that you receive and read the formal delivery specifications before use.

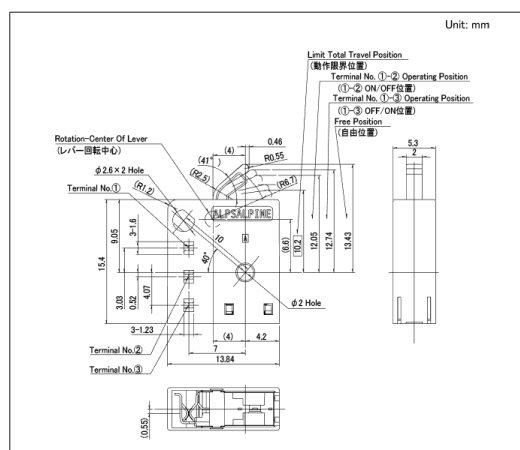
■ Packing Specifications

Bulk

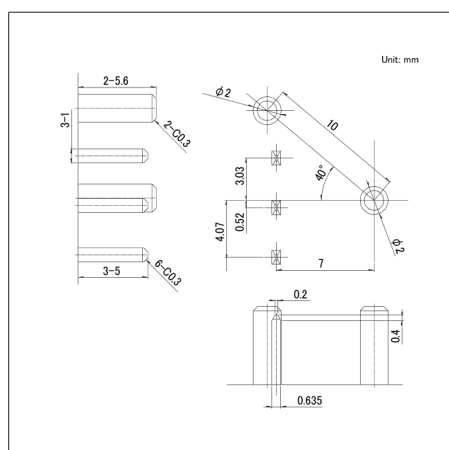
Number of packages(pcs.)		Export package measurements (mm)
1 case / Japan	1 case / export packing	
1,200	6,000	389 x 276 x 380

Drawing No.1

■ Dimensions



■ Recommended Unit Terminal style



■ Circuit Diagram

