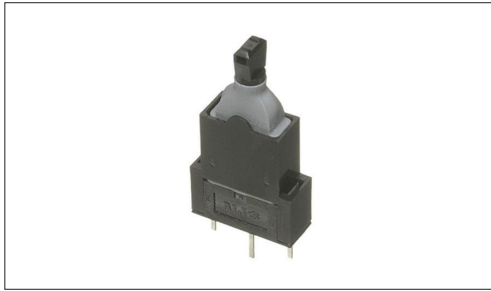


## Switches

## Detector Switches

Water-proof Lever Type  
**SSCN Series**

Water-proof lever switch capable of left-right detection with a 40° operating angle per side.



Automotive



Water-proof Type



Dust-proof Type

- Rating(max.)/(min.)(Resistive load):0.1A 12V DC/100μA 5V DC
- Contact resistance(Initial/After operating life):500mΩ max./1Ω max.
- Operating life without load:100,000 cycles
- Operating life with load Rating(max.)(Resistive load):  
100,000 cycles 1Ω max.

Applications:Energy Industrial:Robots, drones,Industrial equipment

Home:Major home appliances

Automotive:Hood Latch (Side/Rear/Door/Gear)

## ■ Product List

Products No.	Poles	Positions	Operating force	Changeover timing	Terminal type	Dimensions (W×D×H) (mm)	Water-proof	Dust-proof	Automotive	Drawing No.
SSCN110101	1	2	2N max.	Non shorting	For PC board	5.0×13.0×15.0	●	●	●	1

## ⚠ Note

1. This catalog shows only outline specifications. When using the products, please obtain formal specifications for supply.
2. This unit cannot be used in water (IP6K7 rating, except for terminal).
3. Please place purchase orders per minimum order unit (integer).
4. This products can be used in vehicles.

Although these products are designed to perform over a wide operating temperature range, please ensure that you receive and read the formal delivery specifications before use.

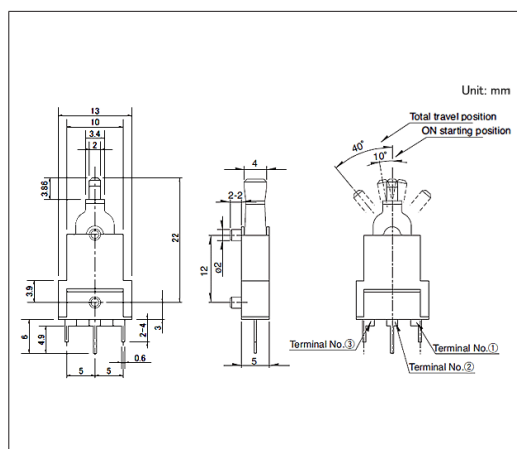
## ■ Packing Specifications

## Tray

Number of packages(pcs.)		Export package measurements (mm)
1 case / Japan	1 case / export packing	
600	2,400	540 x 360 x 270

## Drawing No. 1

## ■ Dimensions



## ■ Circuit Diagram

