

Switches

Detector Switches

Compact Two-way Detection
SSCM Series

Thin-profile type with a body height of 1.5mm, capable of detecting two lateral directions.



- Rating(max.)/(min.)(Resistive load): 1mA 5V DC/50 μ A 3V DC
- Contact resistance(Initial/After operating life): 2 Ω max./5 Ω max.
- Operating life without load: 50,000 cycles
- Operating life with load Rating(max.)(Resistive load):
50,000 cycles 5 Ω max.

Applications: Mobile: Smartphones, tablets, Headsets, wearables,
Notebooks, peripherals
Game: Home handheld consoles, Virtual/augmented reality
Healthcare: Healthcare equipment
Audio_TV: Audio, Cameras

■ Product List

Products No.	Poles	Positions	Operating force	Terminal type	Total travel position	Location lug	Dimensions (W×D×H) (mm)	Water-proof	Dust-proof	Automotive	Drawing No.
SSCM110100	1	2	0.35N max.	For PC board (Reflow)	1.57	With	4.0×5.0×1.5	—	—	—	1
SSCM120100	1	2	0.35N max.	For PC board (Reflow)	1.57	Without	4.0×5.0×1.5	—	—	—	2

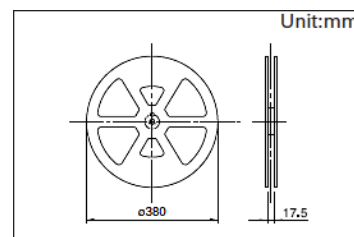
⚠ Note

1. This catalog shows only outline specifications. When using the products, please obtain formal specifications for supply.
2. Please place purchase orders for taping products per minimum order unit (1 reel or a case).
3. For the Terminal Layout, please check our website.

■ Packing Specifications

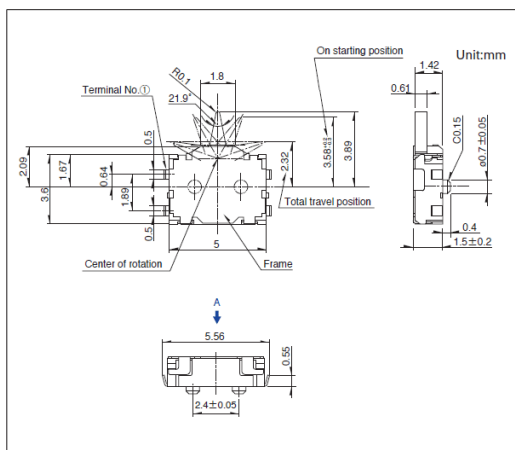
Taping

Number of packages(pcs.)			Tape width (mm)	Export package measurements (mm)
1 reel	1 case / Japan	1 case / export packing		
3,000	6,000	12,000	16	417 x 409 x 139

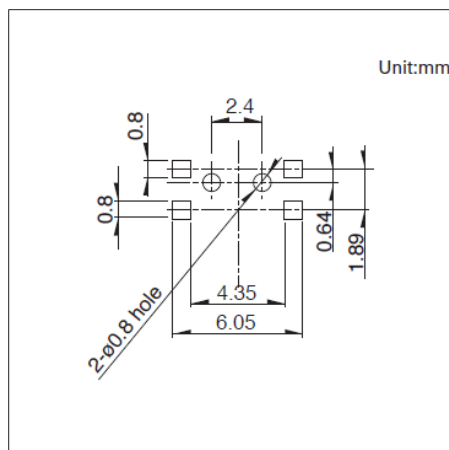


Drawing No.1

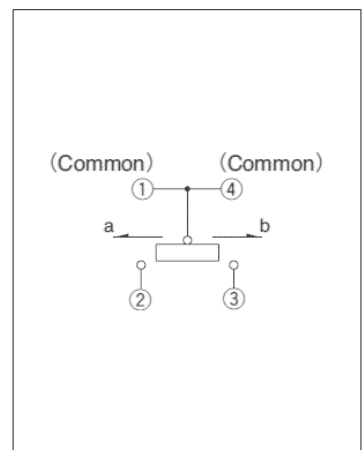
■ Dimensions



■ Land Dimensions



■ Circuit Diagram

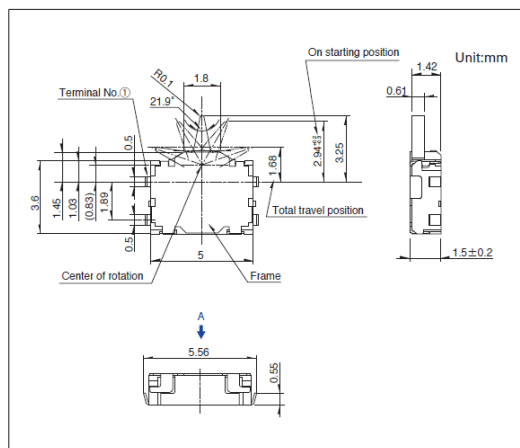


Viewed from direction A in the dimensions.

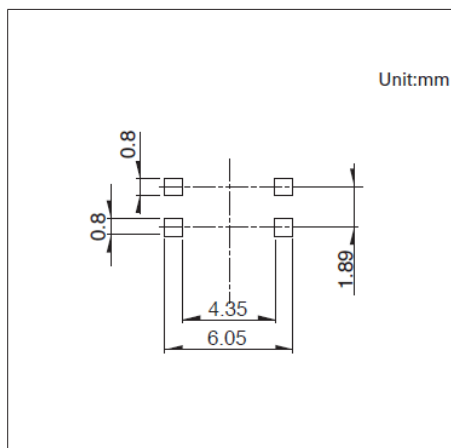
Compact Two-way Detection SSCM Series

Drawing No.2

■ Dimensions



- Land Dimensions



Viewed from direction A in the dimensions.

- Circuit Diagram

