

Switches

Detector Switches

Two-way Detection
SSCF Series

Improved design freedom around set mechanisms with left-right detection capability.



Automotive

- Rating(max.)/(min.)(Resistive load): 0.1 A 12V DC/50 μ A 3V DC
- Contact resistance(Initial/After operating life): 100m Ω max./300m Ω max.
- Operating life without load: 50,000 cycles
- Operating life with load Rating(max.)(Resistive load):
50,000 cycles 300m Ω max.

Applications: Audio_TV: Audio

Automotive: Hood Latch (Side/Rear/Door/Gear)

■ Product List

Products No.	Poles	Positions	Operating force	Changeover timing	Terminal type	Dimensions (W×D×H) (mm)	Water-proof	Dust-proof	Automotive	Drawing No.
SSCF110100	1	2	0.7N max.	Non shorting	For PC board	11.0×5.8×12.4	—	—	●	1
SSCF210100	1	2	0.7N max.	Non shorting	For PC board	15.5×5.8×12.4	—	—	●	2
SSCF210300	1	2	0.7N max.	Non shorting	For Lead	15.5×5.8×12.4	—	—	●	3
SSCF310100	1	2	0.7N max.	Non shorting	For PC board	11.0×5.8×12.4	—	—	●	4

Note

1. This catalog shows only outline specifications. When using the products, please obtain formal specifications for supply.
2. Please place purchase orders per minimum order unit (integer).
3. This products can be used in vehicles.
Although these products are designed to perform over a wide operating temperature range, please ensure that you receive and read the formal delivery specifications before use.
4. For the Terminal Style, please check our website.

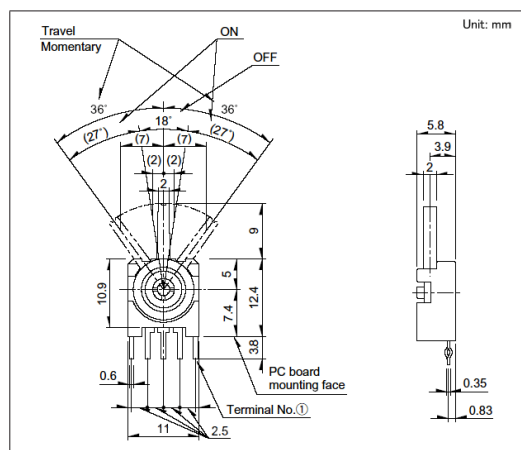
■ Packing Specifications

Bulk

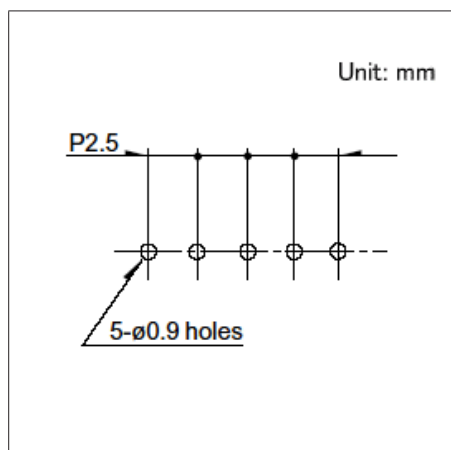
Number of packages(pcs.)		Export package measurements (mm)
1 case / Japan	1 case / export packing	
600	3,000	400 x 270 x 290

Drawing No.1

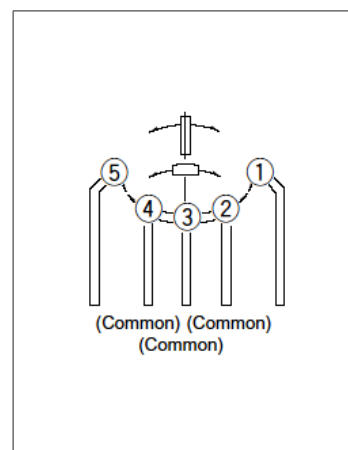
■ Dimensions



■ Mounting Hole Dimensions



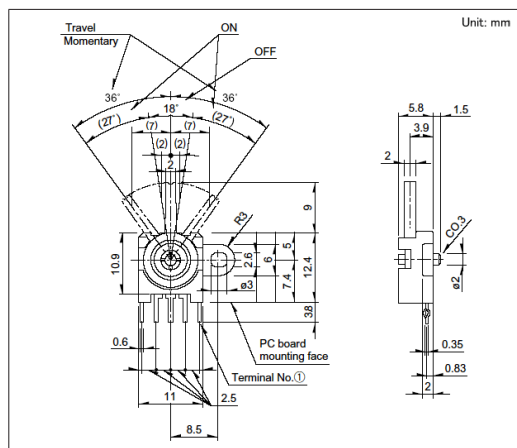
■ Circuit Diagram



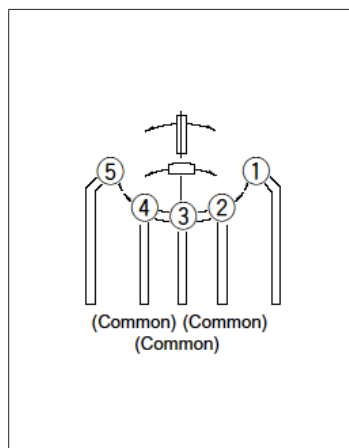
Two-way Detection SSCF Series

Drawing No.2

■ Dimensions

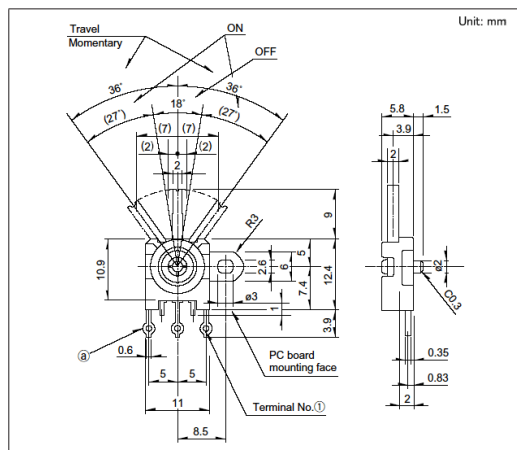


- Circuit Diagram

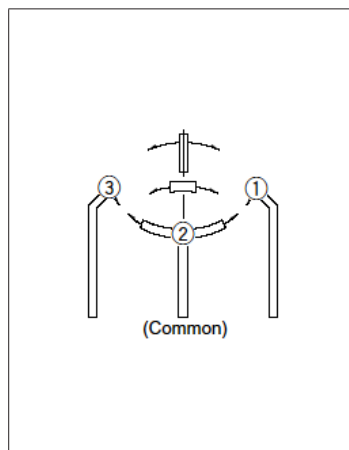


Drawing No.3

■ Dimensions

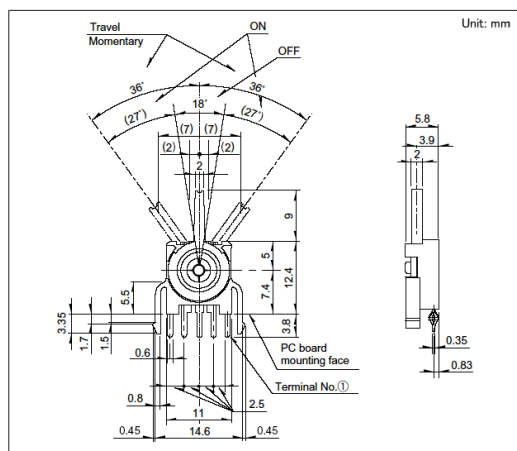


- Circuit Diagram

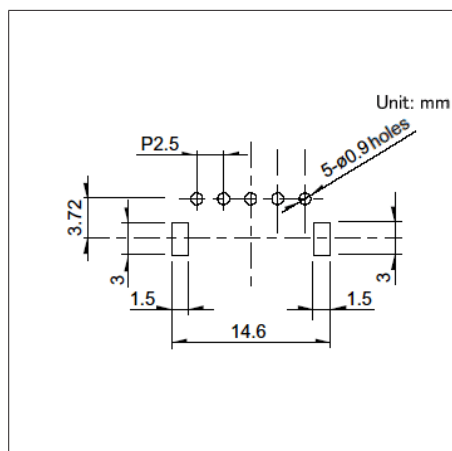


Drawing No.4

■ Dimensions



■ Mounting Hole Dimensions



- Circuit Diagram

