

Switches

Detector Switches

Low-profile Lever

SPVR Series

Thin-profile long-stroke type with a body height of 1.2mm, 4.2×3.6mm.



Automotive

- Rating(max.)/(min.)(Resistive load): 1mA 5V DC/100μA 3V DC
- Contact resistance(Initial/After operating life): 3Ω max./5Ω max.
- Operating life without load: 50,000 cycles
- Operating life with load Rating(max.)(Resistive load):
50,000 cycles 5Ω max.

Applications: Mobile: Smartphones, tablets, Notebooks, peripherals
 Healthcare: Healthcare equipment
 Audio_TV: Cameras
 Automotive: Navigation/audio systems, HVAC

■ Product List

Products No.	Poles	Positions	Operating force	Terminal type	Total travel position	Location lug	Dimensions (W×D×H) (mm)	Water-proof	Dust-proof	Automotive	Drawing No.
SPVR110102	1	1	0.35N max.	For PC board (Reflow)	1.93	With	3.6×4.2×1.2	—	—	●	1
SPVR120102	1	1	0.35N max.	For PC board (Reflow)	1.93	Without	3.6×4.2×1.2	—	—	●	2

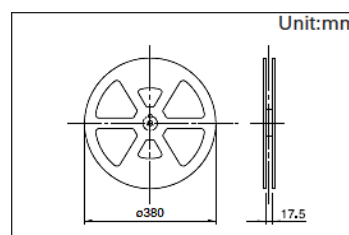
Note

1. This catalog shows only outline specifications. When using the products, please obtain formal specifications for supply.
2. Please place purchase orders per minimum order unit (integer).
3. This products can be used in vehicles.
Although these products are designed to perform over a wide operating temperature range, please ensure that you receive and read the formal delivery specifications before use.
4. For the Terminal Layout, please check our website.

■ Packing Specifications

Taping

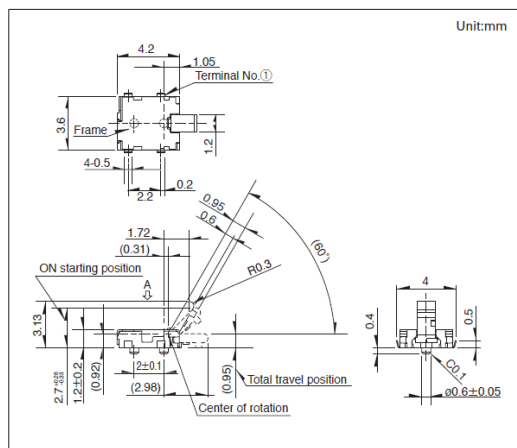
Number of packages(pcs.)			Tape width (mm)	Export package measurements (mm)
1 reel	1 case / Japan	1 case / export packing		
2,500	5,000	10,000	16	417 x 409 x 139



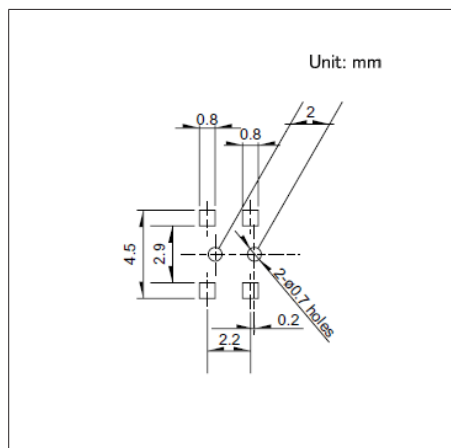
Low-profile Lever
SPVR Series

Drawing No.1

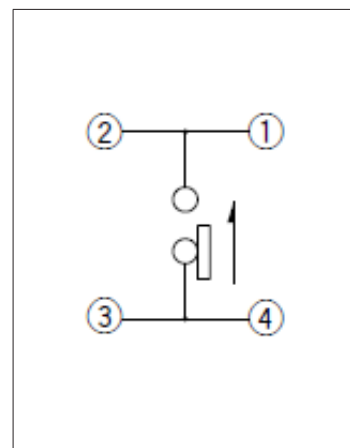
■ Dimensions



■ Land Dimensions



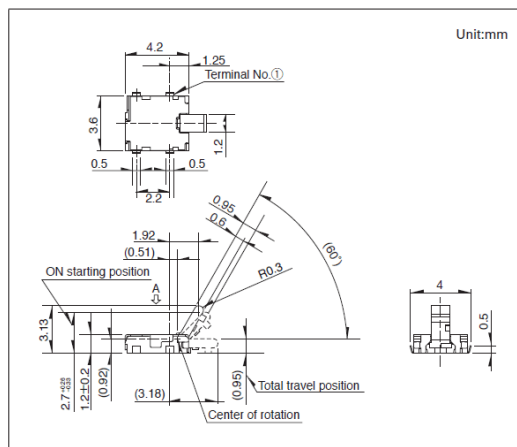
■ Circuit Diagram



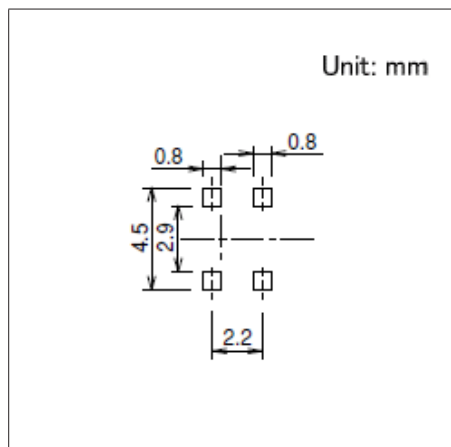
Viewed from direction A in the dimensions.

Drawing No.2

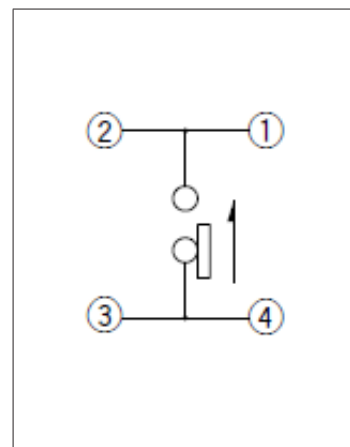
■ Dimensions



■ Land Dimensions



■ Circuit Diagram



Viewed from direction A in the dimensions.