

Switches

Detector Switches

Water-proof Type (Surface Mount)

SPVQF Series

2-circuit synchronous snap action, compact and quiet type



Automotive



Water-proof Type



Dust-proof Type

- Rating(max.)/(min.)(Resistive load): 50mA 18V DC/50 μ A 5V DC
- Contact resistance(Initial/After operating life): 75m Ω max./2 Ω max.
- Operating life without load: 300,000 cycles
- Operating life with load Rating(max.)(Resistive load):
300,000 cycles 2 Ω max.

Applications: Automotive: Electric Parking Brake

Product List

Products No.	Poles	Positions	Operating force	Changeover timing	Operation part shape	Terminal type	Dimensions (W×D×H) (mm)	Water-proof	Dust-proof	Automotive	Drawing No.
SPVQF10201	2	2	1.8N max.	Non shorting	Push	For PC board (Reflow)	6.3×8.5×7.0	●	●	●	1

Note

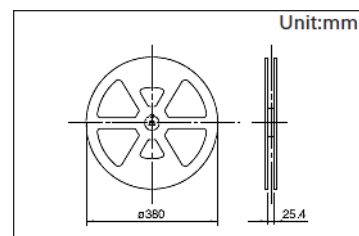
1. This catalog shows only outline specifications. When using the products, please obtain formal specifications for supply.
2. This unit cannot be used in water (IP6K7 rating, except for terminal).
3. Please place purchase orders for taping products per minimum order unit (1 reel or a case).
4. This products can be used in vehicles.

Although these products are designed to perform over a wide operating temperature range, please ensure that you receive and read the formal delivery specifications before use.

Packing Specifications

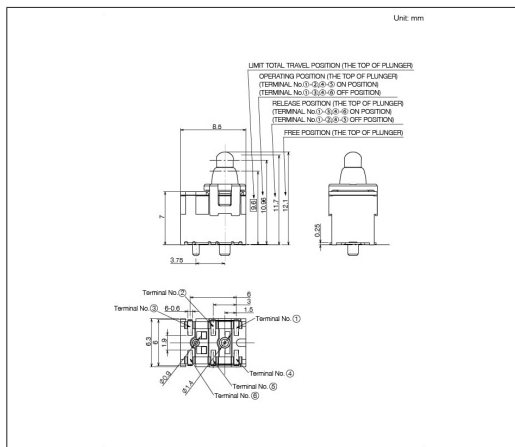
Taping

Number of packages(pcs.)			Tape width (mm)	Export package measurements (mm)
1 reel	1 case / Japan	1 case / export packing		
400	800	1,600	24	428 x 413 x 172

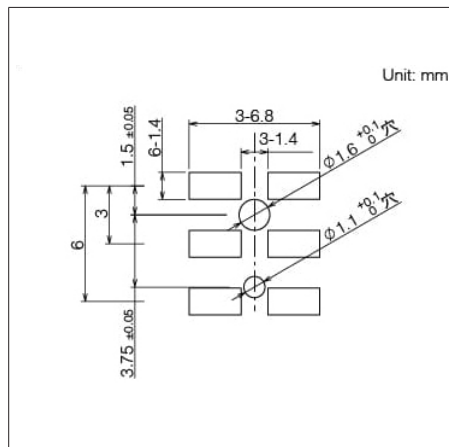


Drawing No.1

Dimensions



Land Dimensions



Circuit Diagram

