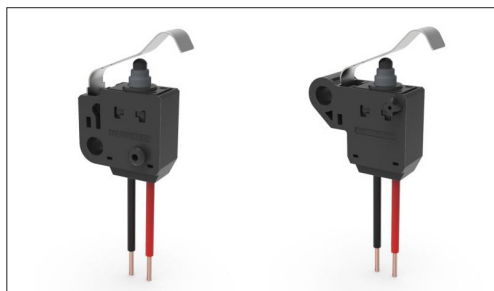


Switches

Detector Switches

Water-proof Type
SPVQ8H Series

Enhanced robustness with a wire pull strength of 110N.



Automotive



Water-proof Type



Dust-proof Type

- Rating(max.)/(min.)(Resistive load):0.1A 16V DC/50 μ A 5V DC
- Contact resistance(Initial/After operating life):500m Ω max./1 Ω max.
- Operating life without load:100,000cycles
- Operating life with load Rating(max.)(Resistive load):
100,000cycles 1 Ω max.

Applications:Energy_Industrial:Robots, drones,Industrial equipment
Home:Major home appliances
Automotive:Hood Latch (Side/Rear/Door/Gear)

■ Product List

Products No.	Poles	Positions	Operating force	Operation part shape	Terminal type	Circuit	Main body form	Dimensions (W×D×H) (mm)	Water-proof	Dust-proof	Automotive	Drawing No.
SPVQ8H0100	1	1	4.7N max.	Actuator	With wire (Downwards)	N/O	With a screw hole (Type A)	6,45×14,8×14,5	●	●	●	1
SPVQ8H0200	1	1	4.7N max.	Actuator	With wire (Downwards)	N/O	With a screw hole (Type B)	6,45×17,95×14,5	●	●	●	2

⚠ Note

1. This catalog shows only outline specifications. When using the products, please obtain formal specifications for supply.
2. Unless specified, the length of the lead wire is 250mm. Color is either red or black. For length modification, please contact us.
3. Product with wire will be build-to-order.
4. This unit cannot be used in water (IP6K7 rating, except for terminal).
5. Place your purchase order in N minimum package units (N: integer).
6. This products can be used in vehicles.
Although these products are designed to perform over a wide operating temperature range, please ensure that you receive and read the formal delivery specifications before use.

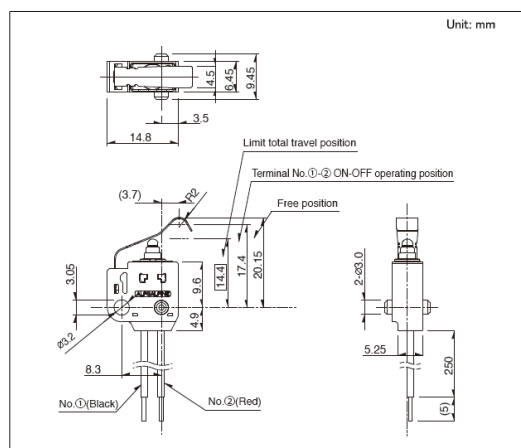
■ Packing Specifications

Bulk

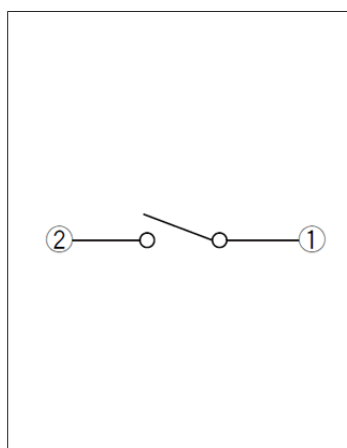
Number of packages(pcs.)		Export package measurements (mm)
1 case / Japan	1 case / export packing	
300	300	360 x 360 x 290

Drawing No.1

■ Dimensions



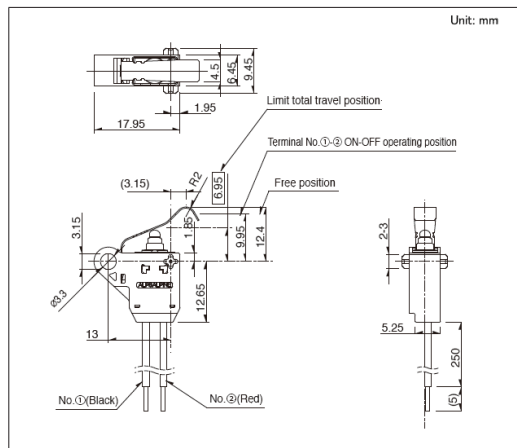
■ Circuit Diagram



Water-proof Type SPVQ8H Series

Drawing No.2

■ Dimensions



■ Circuit Diagram

