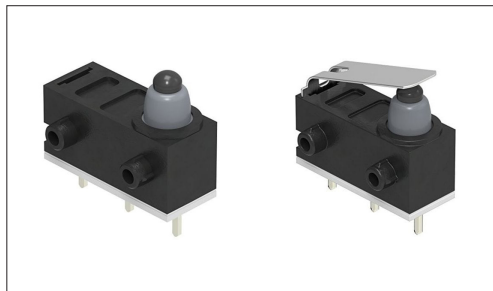


Switches

Detector Switches

Water-proof Type
SPVQ6 Series

Compact type with body dimensions of 13.3×5.3mm and a height of 7.0mm.



Automotive



Water-proof Type



Dust-proof Type

- Rating(max.)/(min.)(Resistive load):0.1 A 12V DC/50 μ A 5V DC
- Contact resistance(Initial/After operating life):500m Ω max./1 Ω max.
- Operating life without load:300,000 cycles
- Operating life with load Rating(max.)(Resistive load):
300,000 cycles 1 Ω max.

Applications:Energy Industrial:Robots, drones,Industrial equipment
Home:Major home appliances
Automotive:Hood Latch (Side/Rear/Door/Gear)

■ Product List

Products No.	Type	Poles	Positions	Operating force	Changeover timing	Operation part shape	Terminal type	Main body form	Dimensions (W×D×H) (mm)	Water-proof	Dust-proof	Automotive	Drawing No.
SPVQ640102	—	1	2	1±0.5N	Non shorting	Push	For PC board	Boss - right side	5.3×13.3×6.5	●	●	●	1
SPVQ640202		1	2	1±0.5N	Non shorting	Push	For PC board	Boss - left side	5.3×13.3×6.5	●	●	●	2
SPVQ630104		1	2	3N max.	Non shorting	Actuator	For PC board	Boss - right side	5.3×13.3×6.5	●	●	●	3
SPVQ630203		1	2	3N max.	Non shorting	Actuator	For PC board	Boss - left side	5.3×13.3×6.5	●	●	●	4
SPVQ6R	With internal resistor type	1	1	3N max.	Non shorting	Actuator	Press-fit (normal type)	Without boss / Left bending	5.3×13.3×6.5	●	●	●	5

⚠ Note

1. This catalog shows only outline specifications. When using the products, please obtain formal specifications for supply.
2. This unit cannot be used in water (IP6K7 rating, except for terminal).
3. Please place purchase orders per minimum order unit (integer).
4. This products can be used in vehicles.
Although these products are designed to perform over a wide operating temperature range, please ensure that you receive and read the formal delivery specifications before use.
5. For the Recommended Unit Terminal Shape for Press-Fit Terminals (Normally Open) for SPVQ6R, please check our website.

■ Packing Specifications

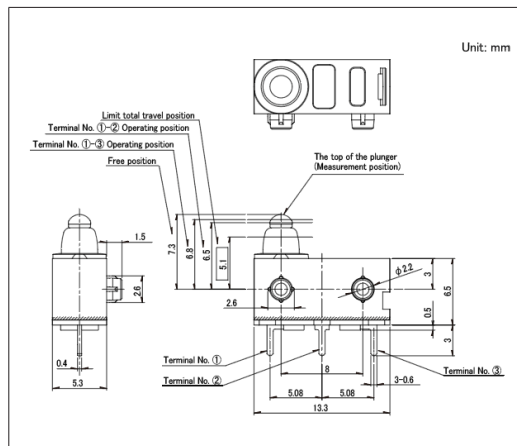
Tray

Number of packages(pcs.)		Export package measurements (mm)
1 case / Japan	1 case / export packing	
1,500	6,000	540×360×270

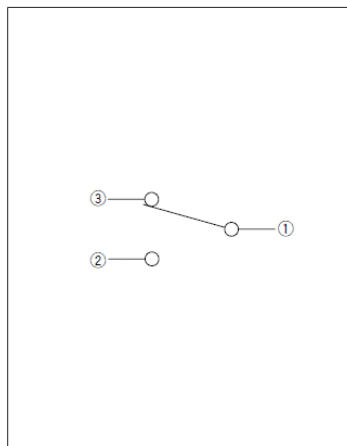
Water-proof Type SPVQ6 Series

Drawing No.1

■ Dimensions

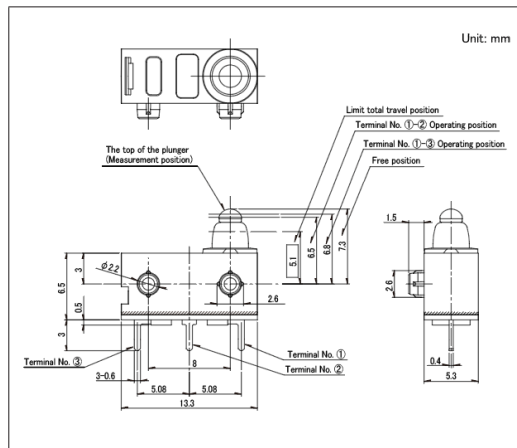


■ Circuit Diagram

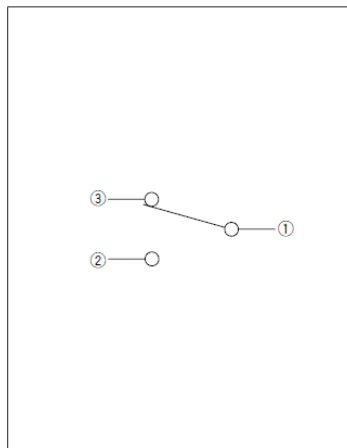


Drawing No.2

■ Dimensions

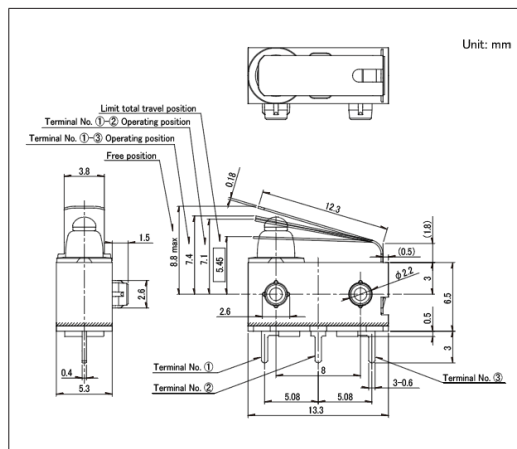


■ Circuit Diagram

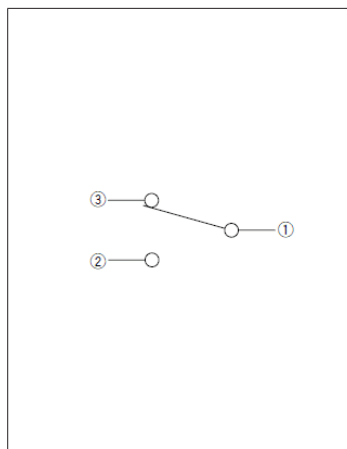


Drawing No.3

■ Dimensions



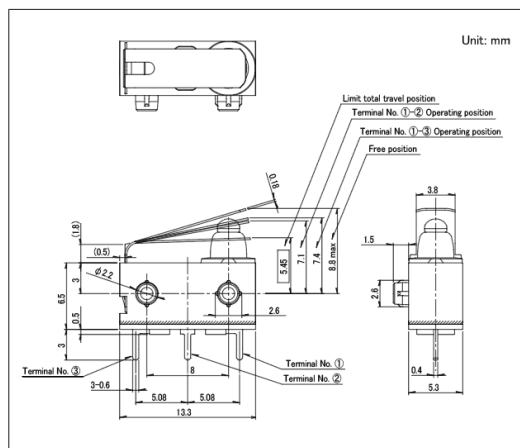
■ Circuit Diagram



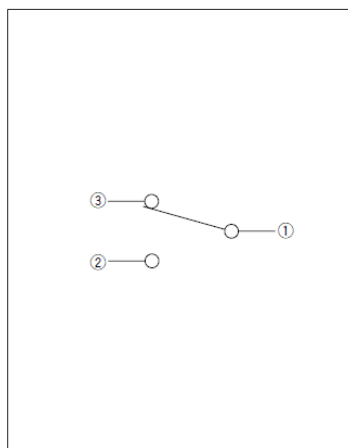
Water-proof Type SPVQ6 Series

Drawing No.4

■ Dimensions

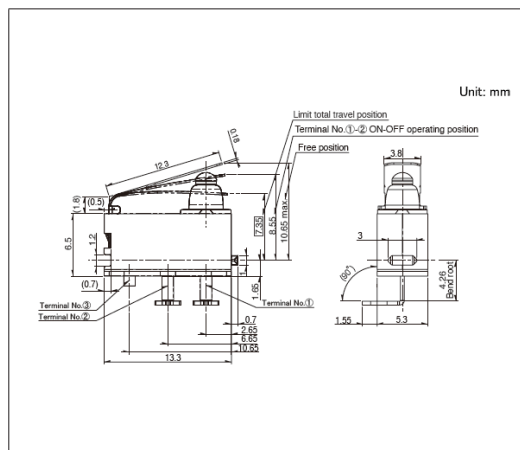


- Circuit Diagram

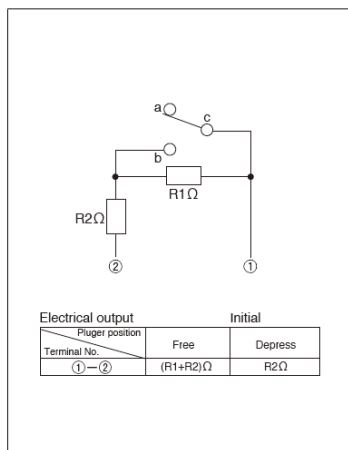


Drawing No.5

- Dimensions



- Circuit Diagram



Please contact us for resistance specifications and rated power.