

Compact Two-way Operation SPVM Series

Compact type with a body height of 1.5mm, 3.5×2.8mm, pressable from two directions, vertical and horizontal.



 Automotive

- Rating(max.)/(min.)(Resistive load): 1mA 5V DC/50 μ A 3V DC
- Contact resistance(Initial/After operating life): 2 Ω max./5 Ω max.
- Operating life without load: 50,000 cycles
- Operating life with load Rating(max.)(Resistive load):
50,000 cycles 5 Ω max.

Applications: Mobile: Smartphones, tablets, Notebooks, peripherals
Healthcare: Healthcare equipment
Audio_TV: Cameras
Automotive: Navigation/audio systems, HVAC

Product List

Products No.	Poles	Positions	Operating force	Terminal type	Location lug	Dimensions (W×D×H) (mm)	Water-proof	Dust-proof	Automotive	Drawing No.
SPVM110104	1	1	0.4N max.	For PC board (Reflow)	With	2.8×3.5×1.5	—	—	●	1
SPVM110204	1	1	0.4N max.	For PC board (Reflow)	Without	2.8×3.5×1.5	—	—	●	2

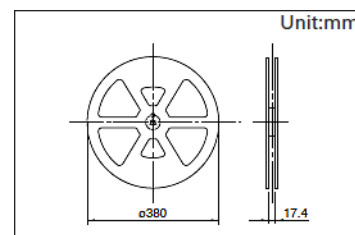
Note

1. This catalog shows only outline specifications. When using the products, please obtain formal specifications for supply.
2. Please place purchase orders per minimum order unit (integer).
3. This products can be used in vehicles.
Although these products are designed to perform over a wide operating temperature range, please ensure that you receive and read the formal delivery specifications before use.
4. For the Terminal Layout, please check our website.

Packing Specifications

Taping

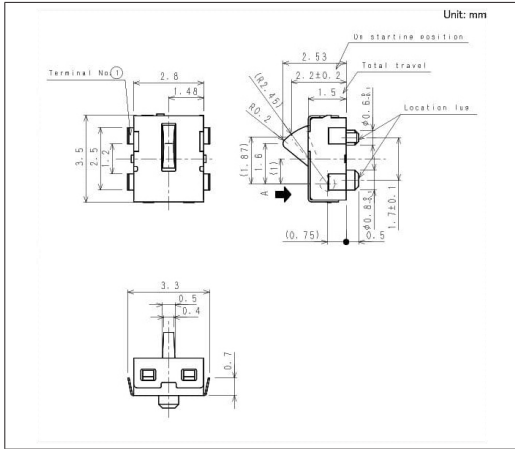
Number of packages (pcs.)			Tape width (mm)	Export package measurements (mm)
1 reel	1 case / Japan	1 case / export packing		
3,000	6,000	12,000	16	417 x 409 x 139



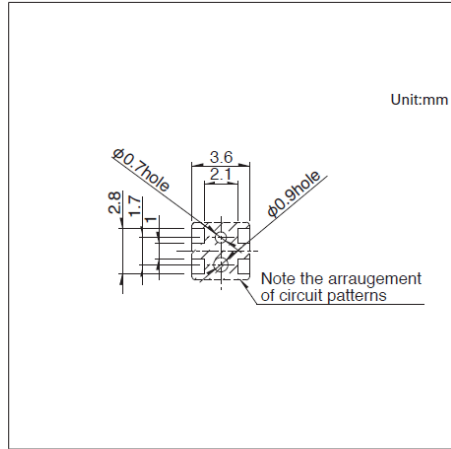
Compact Two-way Operation
SPVM Series

Drawing No.1

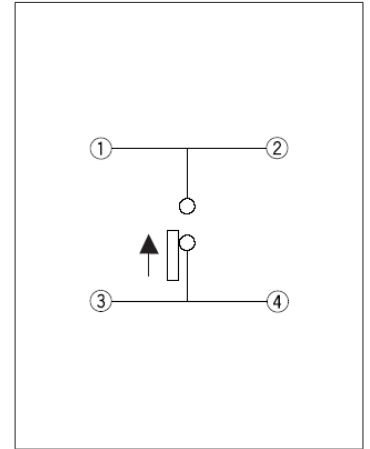
■ Dimensions



■ Land Dimensions



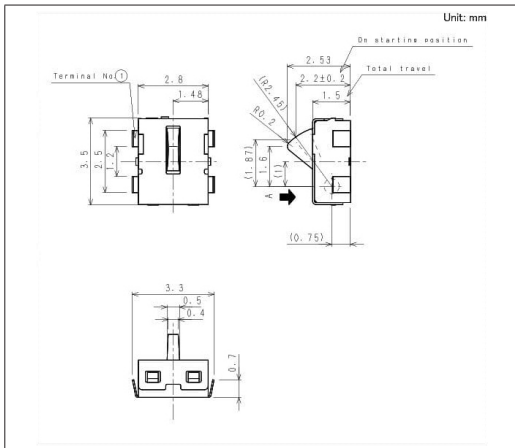
■ Circuit Diagram



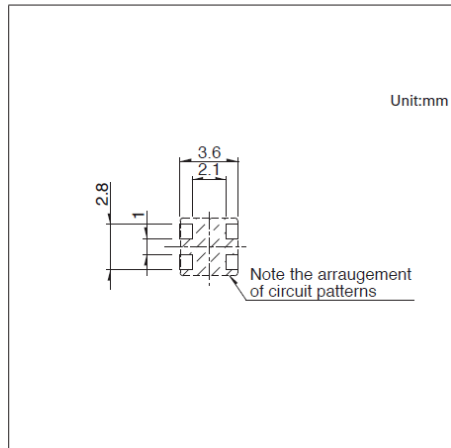
Viewed from direction A in the dimensions.

Drawing No.2

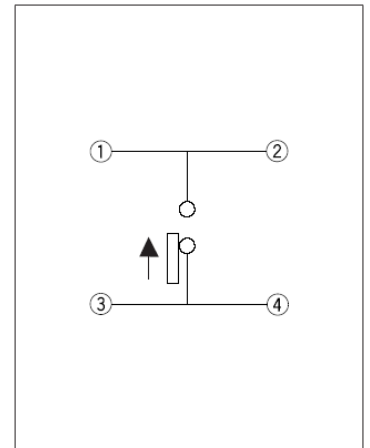
■ Dimensions



■ Land Dimensions



■ Circuit Diagram



Viewed from direction A in the dimensions.