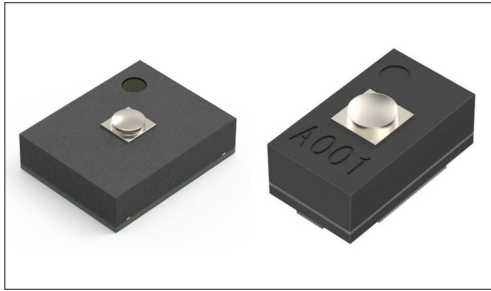


Force Sensor HSFPAR Series

High-sensitivity load detection in a compact package.



 Automotive

※Please check the product list for compatible products

- Type: Load detection
- Mounting method: Surface mount

Applications: Mobile: Smartphones, tablets, Headsets, wearables,
Notebooks, peripherals
Game: VR-AR, Virtual/augmented reality
Healthcare: Healthcare equipment, Nursing care
equipment, Analysis, test equipment
Automotive: Navigation/audio systems, HVAC, Motorcycles

Product List

| Products No. | Function | Features | Interface | Force range | Operating temperature range | Supply voltage | Size (mm) | Automotive | Drawing No. |
|--------------|----------------|--|----------------|-------------|-----------------------------|----------------|----------------|------------|-------------|
| HSFPAR004A | Load detection | High-sensitivity load detection with a compact package | Analog voltage | 0 to 8N | -40°C to +85°C | 1.5 to 3.6V | 2.0×1.6×0.66 | — | 1 |
| HSFPAR007A | Load detection | High-sensitivity load detection with a compact package | Analog voltage | 0 to 8N | -40°C to +85°C | 1.5 to 3.6V | 1.5×0.85×0.68 | — | 2 |
| HSFPAR304A | Load detection | SMD-unit type | Analog voltage | 0 to 20N | -40°C to +85°C | 1.5 to 6V | 4.20×3.60×2.69 | ● | 3 |

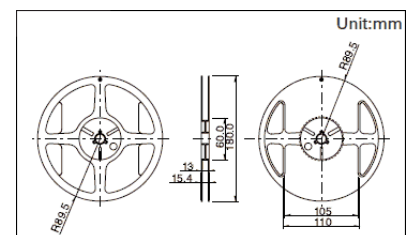
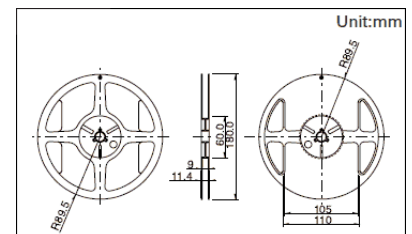
Note

1. This catalog shows only outline specifications. When using the products, please obtain formal specifications for supply.
2. Please place purchase orders for taping products per minimum order unit (1 reel or a case).

Packing Specifications

Taping

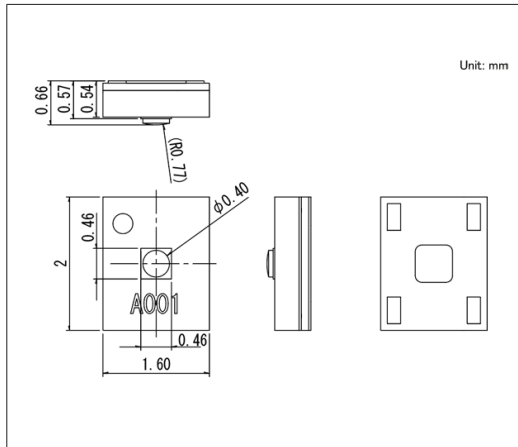
| Products No. | Number of packages(pcs.) | | | Tape width (mm) | Export package measurements (mm) |
|--------------------------|--------------------------|----------------|-------------------------|-----------------|----------------------------------|
| | 1 reel | 1 case / Japan | 1 case / export packing | | |
| HSFPAR004A HSFPAR007A | 3,000 | 3,000 | 45,000 | 8 | 210×210×230 |
| HSFPAR304A | 400 | 400 | 4,000 | 12 | 210×210×230 |



Force Sensor
HSFPAR Series

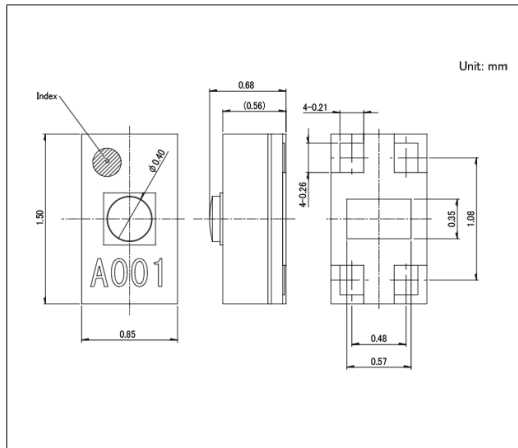
Drawing No.1

■ Dimensions



Drawing No.2

■ Dimensions



Drawing No.3

■ Dimensions

