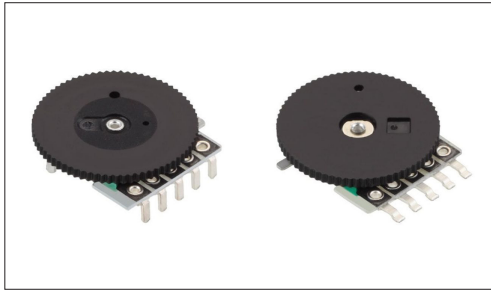


Potentiometers Rotary Potentiometer (Knob operating type)

With Knob Type RK10J Series

Thin-profile design compatible with reflow and dip mounting methods.



- Total resistance tolerance: $\pm 30\%$
- Maximum operating voltage: 50V AC, 20V DC
- Rotational torque: 0.5 to 10mN·m
- Operating life: 10,000 cycles
- Operating temperature range: -10°C to $+60^{\circ}\text{C}$

Applications: Home: Major home appliances, Office equipment
Audio_TV: Visual, Audio

■ Product List

Products No.	Number of resistor elements	Soldering	Knob types	Mounting board types	For DC use	Total resistance	Resistance taper	Automotive	Drawing No.
RK10J11E0034	Single-unit	Manual	Outer size: $\phi 14$ Knob thickness: t0.9mm Color: Black	Insertion (t: 2mm)	20V DC	10k Ω	1B	—	1
RK10J12E0A0A	Dual-unit	Manual	Outer size: $\phi 14$ Knob thickness: t0.9mm Color: Black	Insertion (t: 2mm)	Not applicable	10k Ω	15A	—	2
RK10J11R0A0L	Single-unit	Reflow	Outer size: $\phi 14$ Knob thickness: t1.0mm Color: Black	Surface mounting	20V DC	10k Ω	1B	—	3
RK10J12R0A0B	Dual-unit	Reflow	Outer size: $\phi 14$ Knob thickness: t1.0mm Color: Black	Surface mounting	Not applicable	10k Ω	15A	—	4

⚠ Note

1. This catalog shows only outline specifications. When using the products, please obtain formal specifications for supply.
2. Please place purchase orders per minimum order unit (integer).
3. Products other than those listed in above products are also available. Please contact us for details.

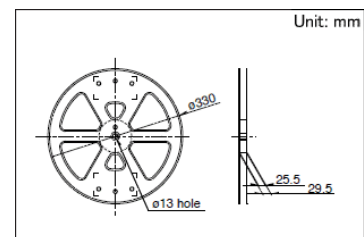
■ Packing Specifications

Bulk

Products No.	Number of packages(pcs.)		Export package measurements (mm)
	1 case / Japan	1 case / export packing	
RK10J11E0034 RK10J12E0A0A	3,000	2,400	371 x 250 x 190

Taping

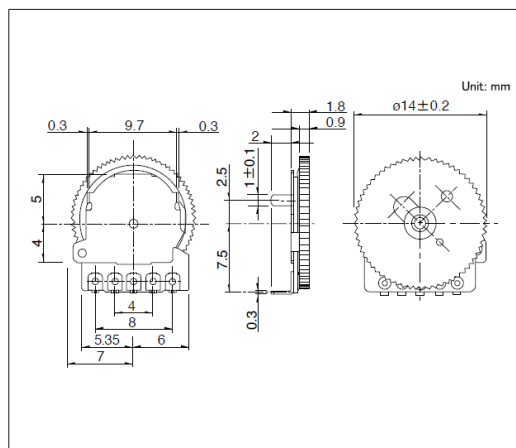
Products No.	Number of packages(pcs.)			Tape width (mm)	Export package measurements (mm)
	1 reel	1 case / Japan	1 case / export packing		
RK10J11R0A0L RK10J12R0A0B	1,000	3,000	3,000	24	401 x 397 x 139



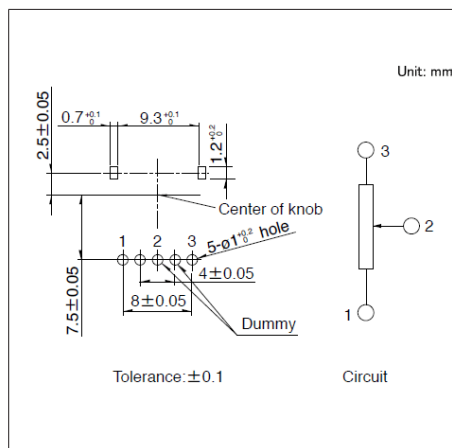
With Knob Type RK10J Series

Drawing No.1

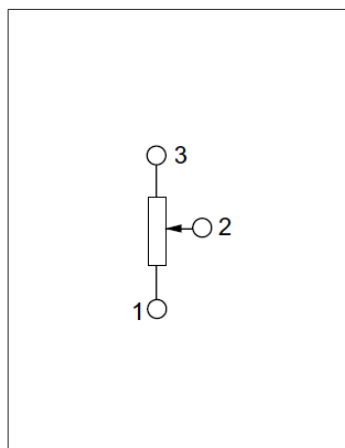
■ Dimensions



■ Mounting Hole Dimensions



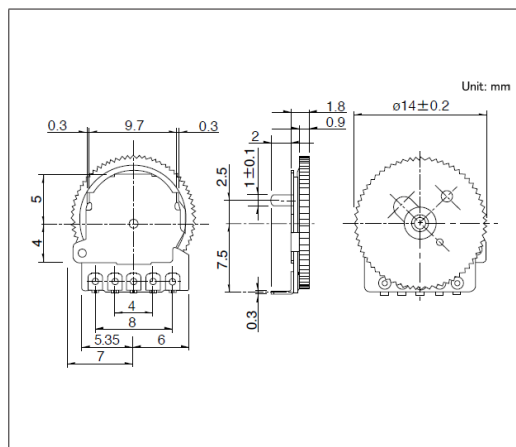
- Circuit Diagram



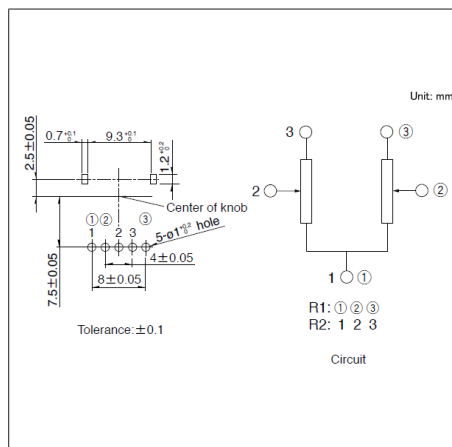
Viewed from mounting side.

Drawing No.2

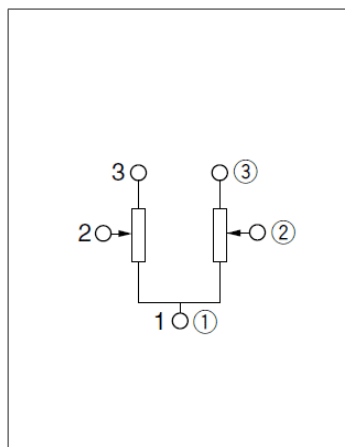
■ Dimensions



■ Mounting Hole Dimensions



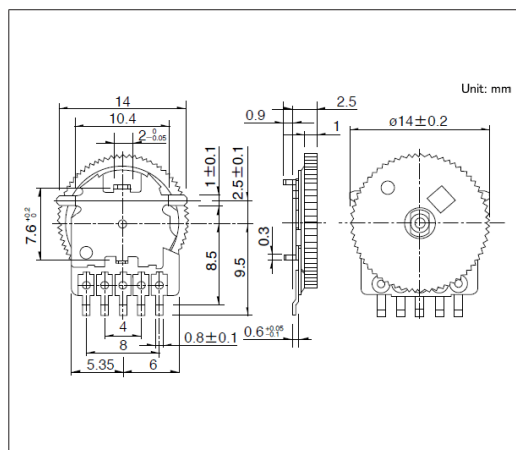
- Circuit Diagram



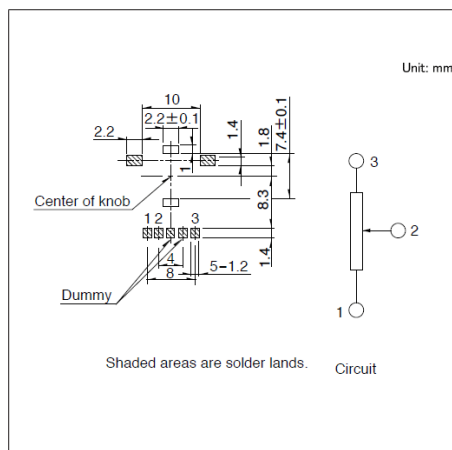
Viewed from mounting side.

Drawing No.3

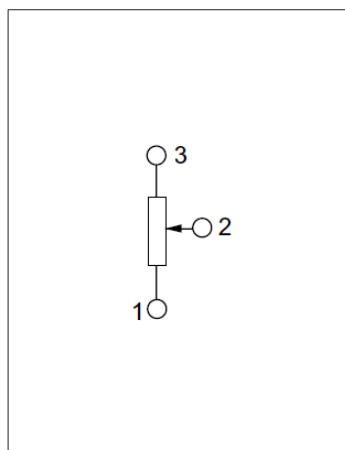
■ Dimensions



■ Mounting Hole Dimensions



- Circuit Diagram

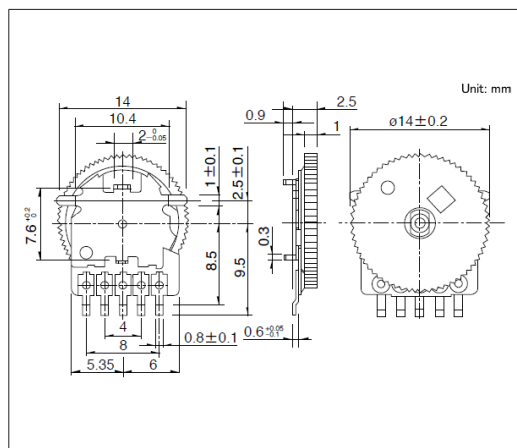


Viewed from mounting side.

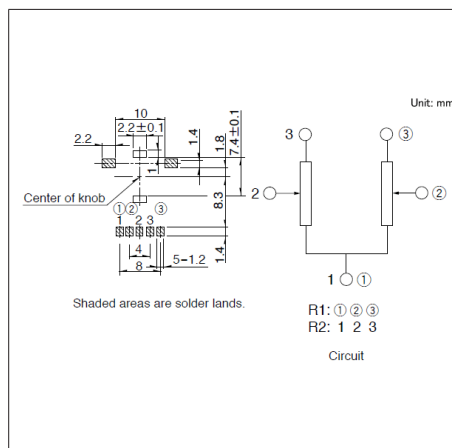
With Knob Type RK10J Series

Drawing No.4

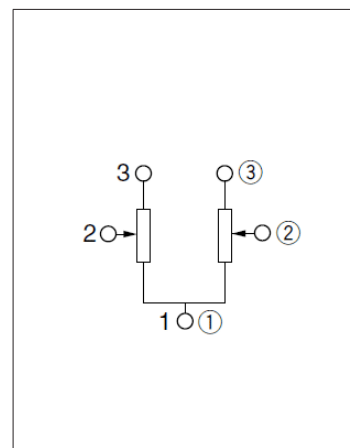
■ Dimensions



■ Mounting Hole Dimensions



- Circuit Diagram



Viewed from mounting side.