

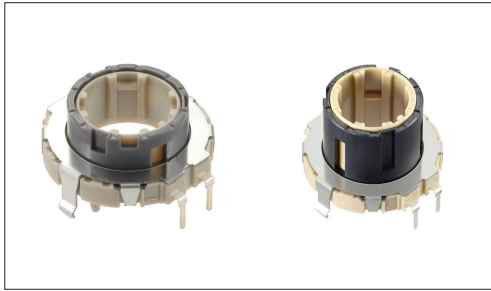
Encoders

Ring Encoder

21mm Size Ring Type

EC21A/EC21C Series

Hollow type suited for multifunctionality, offering a thin 4.0mm thickness for space savings.



Automotive

- Output signal: Two phase A and B
- Ratings: 10mA 5V DC
- Operating life: 50,000 cycles

Applications: Home: Major home appliances, Office equipment
 Audio_TV: Visual
 Automotive: Navigation/audio systems, HVAC

■ Product List

Products No.	Actuator length (mm)	Detent torque	Number of detent	Number of pulse	Automotive	Drawing No.
EC21A1540401	9.0	7±5mN·m	30	15	●	1
EC21A1520401	9.0	16±7mN·m	30	15	●	
EC21A0920401	9.0	16±7mN·m	18	9	●	2
EC21A1520407	15.0	16±7mN·m	30	15	●	3
EC21A0950402	15.0	12±5mN·m	18	9	●	4
EC21C1520402	12.0	17±8mN·m (Initial) 12(+7, -4)mN·m (After reflow)	30	15	●	5

Note

1. This catalog shows only outline specifications. When using the products, please obtain formal specifications for supply.
2. Please place purchase orders per minimum order unit (integer).

■ Packing Specifications

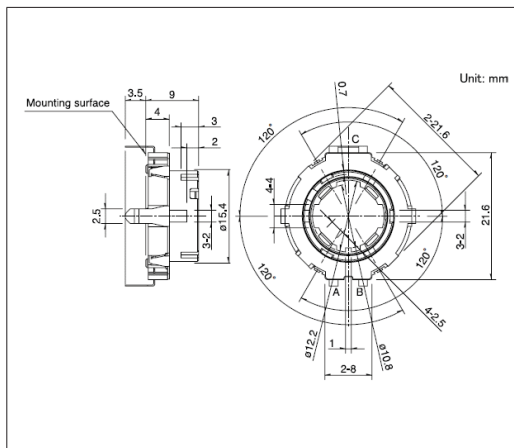
Tray

Products No.	Number of packages(pcs.)		Export package measurements (mm)
	1 case / Japan	1 case / export packing	
EC21A1540401 EC21A1520401	600	1,200	508 x 364 x 192
EC21A0920401	240	480	375 x 285 x 223
EC21A1520407 EC21A0950402	600	1,200	540 x 360 x 290
EC21C1520402	640	640	400 x 310 x 185

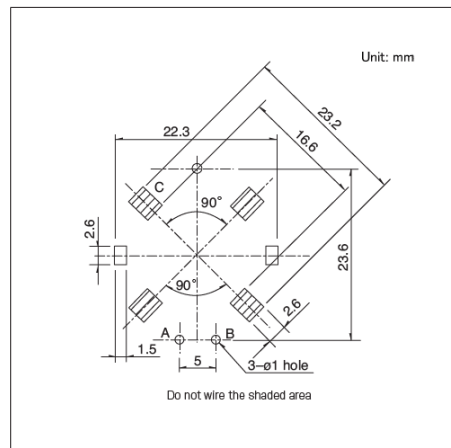
21mm Size Ring Type EC21A/EC21C Series

Drawing No.1

- Dimensions



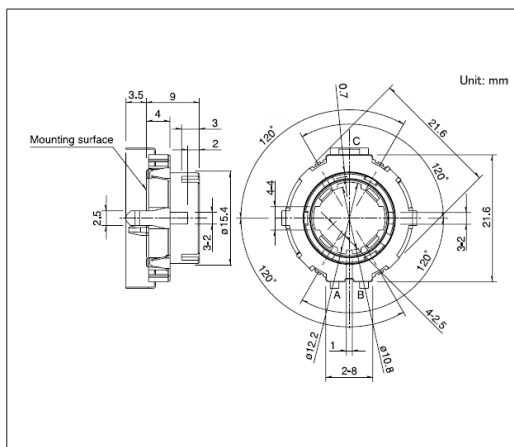
■ Mounting Hole Dimensions



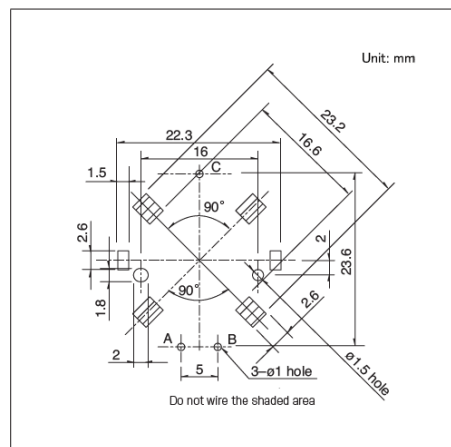
Viewed from mounting side

Drawing No.2

- Dimensions



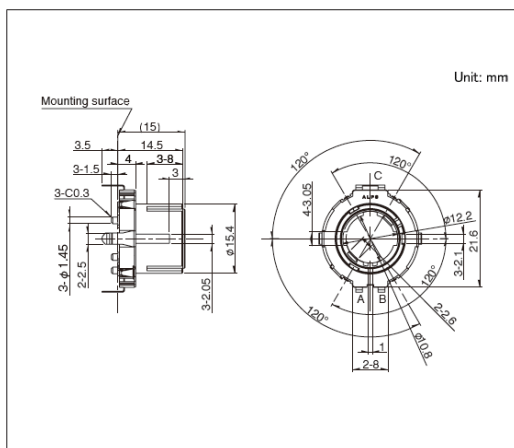
■ Mounting Hole Dimensions



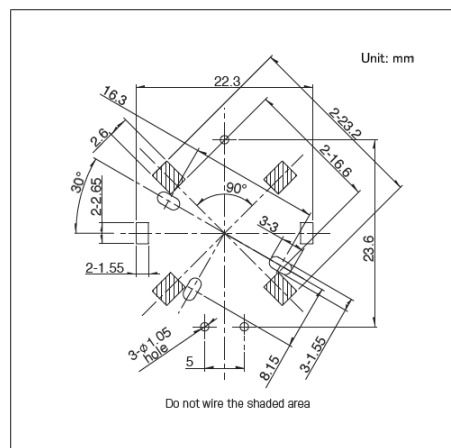
Viewed from mounting side

Drawing No.3

■ Dimensions



■ Mounting Hole Dimensions



Viewed from mounting side

