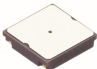




Pressure Sensors

List of Varieties

Series	HSPPAR	HSPPAD (Water-proof)	HSFPAR
Photo			
Type	Atmospheric pressure detection	Atmospheric pressure detection, Depth of water detection	Load detection
Water-proof	—	●	—
Mounting method	Surface mount		
Dimensions (mm)	2.5×2.5×0.7	3.1×3.1×2.6	1.5×0.85×0.68 2.0×1.6×0.66
Interface	Differential voltage	I ² C	—
Operating temperature range	-20℃ to +85℃	-40℃ to +85℃	
Supply voltage	—	1.7 to 3.6V	1.5 to 3.6V
Automotive	—	—	—



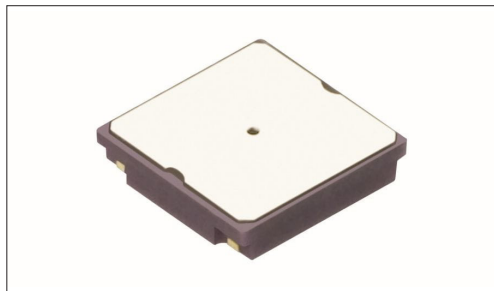
● Indicates applicability to all products in the series, while ○ indicates applicability to some products in the series.

Sensors

Pressure Sensors

MEMS Pressure Sensor
HSPPAR Series

Compact type expanding application possibilities.



- Type: Atmospheric pressure detection
- Mounting method: Surface mount

Applications: Mobile: Smartphones, tablets, Headsets, wearables,
Notebooks, peripherals
Energy_Industrial: Robots, drones, Industrial equipment,
Converters
Game: Virtual/augmented reality
Healthcare: Healthcare equipment, Nursing care equipment,
Analysis, test equipment
Home: Major home appliances

■ Product List

Products No.	Function	Features	Interface	Pressure measurement range	Operating temperature range	Size (mm)	Automotive	Drawing No.
HSPPAR003D	Atmospheric pressure detection	Pressure sensor element contained within housing	Differential voltage	500 to 1100hPa	-20°C to +85°C	2.5×2.5×0.7	—	1

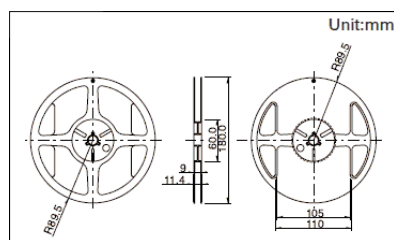
⚠ Note

1. This catalog shows only outline specifications. When using the products, please obtain formal specifications for supply.
2. Place your purchase order in N minimum package units (N: integer).

■ Packing Specifications

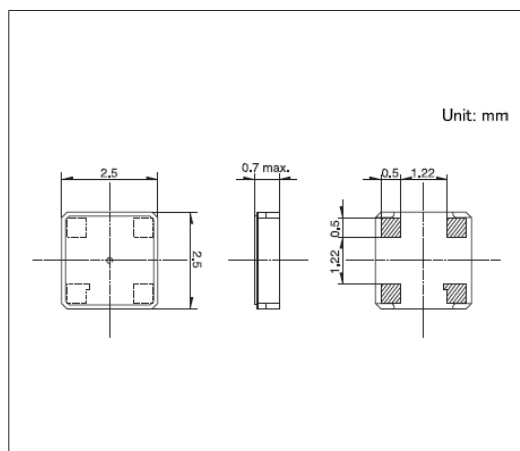
Taping

Number of packages (pcs.)			Tape width (mm)	Export package measurements (mm)
1 reel	1 case / Japan	1 case / export packing		
3,000	3,000	45,000	8	210×210×230



Drawing No.1

■ Dimensions



Water-proof piezoresistive design, suitable for water depth detection.

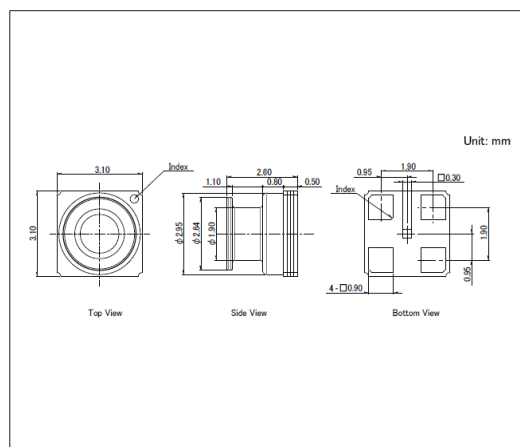
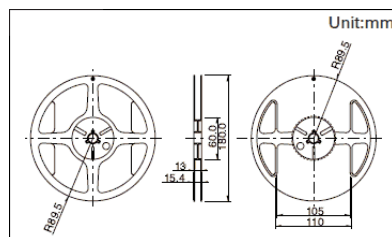


Mobile: Headsets, wearables

Products No.	Function	Features	Interface	Pressure measurement range	Operating temperature range	Size (mm)	Automotive	Drawing No.
HSPPAD143C	Atmospheric pressure detection, Depth of water detection (Water-proof)	Water-proof pressure sensor, output range 300 to 2000hPa	I ² C	300 to 2000hPa	-40℃ to +85℃	3.1×3.1×2.6	—	1
HSPPAD147A	Atmospheric pressure detection, Depth of water detection (Water-proof)	Water-proof pressure sensor, output range 30 to 750kPa	I ² C	30 to 750kPa	-40℃ to +85℃	3.1×3.1×2.6	—	
HSPPAD148A	Atmospheric pressure detection, Depth of water detection (Water-proof)	Water-proof pressure sensor, output range 30 to 3200kPa	I ² C	30 to 3200kPa	-40℃ to +85℃	3.1×3.1×2.6	—	



Number of packages(pcs.)			Tape width (mm)	Export package measurements (mm)
1 reel	1 case / Japan	1 case / export packing		
500	500	5,000	12	210×210×230



Force Sensor

HSFPAR Series

High-sensitivity load detection in a compact package.



- Type: Load detection
- Mounting method: Surface mount

Applications: Mobile: Smartphones, tablets, Headsets, wearables,
Notebooks, peripherals
Game: Virtual/augmented reality
Healthcare: Healthcare equipment, Nursing care equipment,
Analysis, test equipment

■ Product List

Products No.	Function	Features	Force range	Operating temperature range	Supply voltage	Size (mm)	Automotive	Drawing No.
HSFPAR004A	Load detection	High-sensitivity load detection with a compact package	0 to 8N	-40°C to +85°C	1.5 to 3.6V	2.0×1.6×0.66	—	1
HSFPAR007A	Load detection	High-sensitivity load detection with a compact package	0 to 8N	-40°C to +85°C	1.5 to 3.6V	1.5×0.85×0.68	—	2

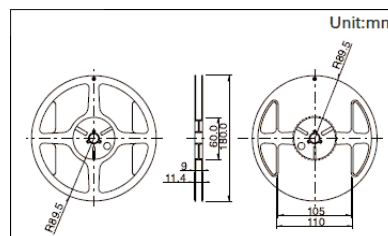
Note

1. This catalog shows only outline specifications. When using the products, please obtain formal specifications for supply.
2. Please place purchase orders for taping products per minimum order unit (1 reel or a case).

■ Packing Specifications

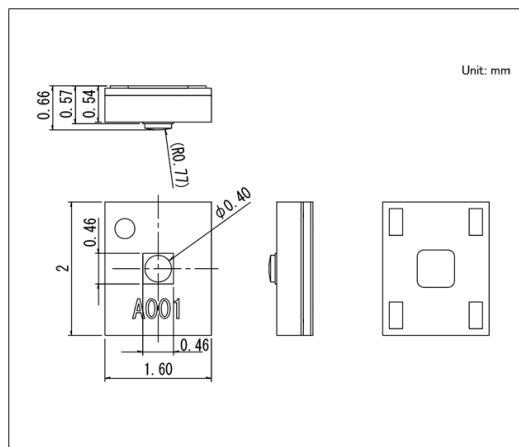
Taping

Number of packages (pcs.)			Tape width (mm)	Export package measurements (mm)
1 reel	1 case / Japan	1 case / export packing		
3,000	3,000	45,000	8	210×210×230



Drawing No. 1

■ Dimensions



Drawing No.2

■ Dimensions

