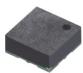
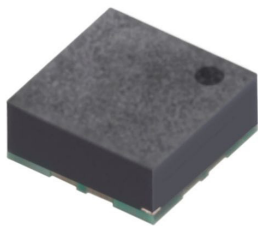


Geomagnetic Sensors

List of Varieties

Series		HSCD
Photo		
Type		Electric compass
Dimensions (mm)		1.6×1.6×0.65 8pin LGA
Operating voltage	AVDD: Drive voltage	+1.7 to +3.6V
	DVDD_io: Drive voltage	+1.65 to AVDD
Operating magnetic field		±2.4mT
Current consumption		3μA typ. (standby) 60μA typ. (active)
Operating temperature range		-40°C to +85°C
Interface		I ² C
Automotive		—

High azimuth accuracy and low current consumption.



Products No.	Measurement range	Interface	Operating voltage		Current consumption	Size (mm)	Automotive	Drawing No.
			AVDD: Drive voltage	DVDD_io: Drive voltage				
HSCDTD008A	±2.4mT	I ² C	+1.7 to +3.6V	+1.65 to AVDD	60μA typ. (active) 3μA typ. (standby)	1.6×1.6×0.65 8pin LGA	—	1

Number of packages(pcs.)			Tape width (mm)	Export package measurements (mm)
1 reel	1 case / Japan	1 case / export packing		
3,000	3,000	45,000	8	210×210×230

